



# SILVERSANDS

GRENADA

## AN INTIMATE LUXURY RESORT

Silversands Grenada is a new intimate luxury resort that opened on December 1, 2018 - an ode to sophisticated simplicity and outstanding service. Located on Grand Anse Beach in Grenada, with over two hundred meters (seven hundred feet) of beach front and a one hundred meter (330-ft.) long swimming pool. There is a total of total of 52 guest rooms, including five four-bedroom Beachfront Villas, four three-bedroom Hillside Villas, and 43 rooms and suites. Guests will enjoy access to the Silversands Spa, beach club with resident DJ and two globally inspired restaurants, Asiatique and the Grenadian Grill, drawing on Grenada's fresh seafood and its reputation as "the Spice of the Caribbean."

A member of The Leading Hotels of the World and selected as a Virtuoso Preview Property.







SILVERSANDS

GRENADA

## THE AIR IS FULL OF SPICES... ASIATIQUE

Asiatique is a fine dining restaurant open daily for breakfast and dinner. Integrating Asian cooking methods with Grenadian spices and fresh local produce. Modern Thai Cuisine pays tribute to the vibrant dishes of Bangkok, offers fresh caught fish from the island. A one thousand bottle wine cellar and craft cocktail menu complete the experience within a refined and yet relaxed atmosphere overlooking the resort pool.







SILVERSANDS

GRENADA

## DRINK THE WILD AIR... GRENADIAN GRILL

The Grenadian Grill serves Mediterranean cuisine and authentic Grenadian dishes. Fresh-caught fish, seafood, and Black Angus cuts are cooked in a Josper oven. A relaxed, feet-in-the-sand ambiance for lunch and a refined dinner experience awaits. When the night falls the beachfront deck comes to life with vibrant tunes from in-house DJ's and local live bands. Splendid ocean views and warm breezes from Grand Anse are offered daily.







SILVERSANDS

GRENADA

## TO FINALLY SIT STILL... PURO

Cubans mastered cigar making methods and they call them “Puro”, the Spanish word for pure.

The intimate cigar and rum lounge invites you to slow down and savour the night, with pure rums and fine cigars. Sip rare, small batch selections from the world’s finest rum distilleries and local favourites. A carefully curated selection of “puros” will complement the rum flavours and create the perfect evening to finally sit still.







SILVERSANDS

GRENADA

## JUST BREATHE... SILVERSANDS SPA

Unwind, get on island time with locally-inspired treatments and rituals in the Silversands Spa.

This unique sanctuary includes four tranquil treatment rooms, a sauna, a hammam, an experiential shower, an ice cave and a high-tech fitness center. The space is anchored around a light-filled, temperature-controlled private swimming pool and unique relaxation area with poolside cabanas designed to create a cocoon of calm before and following treatments.







# SILVERSANDS

GRENADA

## ROOMS, SUITES AND VILLAS

The architects of Silversands Grenada, AW<sup>2</sup>, Reda Amalou & Stéphanie Ledoux, communed with nature to bring you Grenada at her most rapturous. Floor-to-ceiling windows let the natural beauty of the island flow through. Each bed is positioned for maximum views and the private terraces invite you to linger.

Hotel rooms and suites are located on in the two hotel buildings:





SILVERSANDS

GRENADA

## SILVERSANDS ROOMS

The Silversands Rooms come in three categories, the Garden, Ocean View or Penthouse Level. All impeccably designed and providing different views. The Garden level has views of the splendid flora of Grenada and provide easy access to all the resort facilities, the Ocean View and the Penthouse Level rooms look over the tree canopy and on to the ocean beyond.

The Silversands Rooms are generously sized with a total of sixty-seven square meters (721 square feet) of indoor and outdoor private space. The open plan bedroom and living area welcomes guests with a marble top desk located behind the headboard of the king size bed. The bed faces the seating area and the outdoor terrace. A floor to ceiling remote-controlled curtain envelops the bed. At the foot of the bed, the sitting area of the open floor suite has a chaise longue, a coffee table and a chair. Built-in wardrobes with plenty of storage surround the sitting area. The twelve and a half square meter (136 square feet) terrace is equipped with a café style dining table and chairs for two, as well as one chaise longue. Pictured below is the Silversands Ocean View which is located on the middle floor of the three-story building:







SILVERSANDS

GRENADA

The well-appointed bathroom in the **SILVERSANDS ROOMS** includes a deep soaking tub, a separate rain shower, a double vanity unit, and a water closet. All Penthouse Level Rooms have bathrooms with windows:





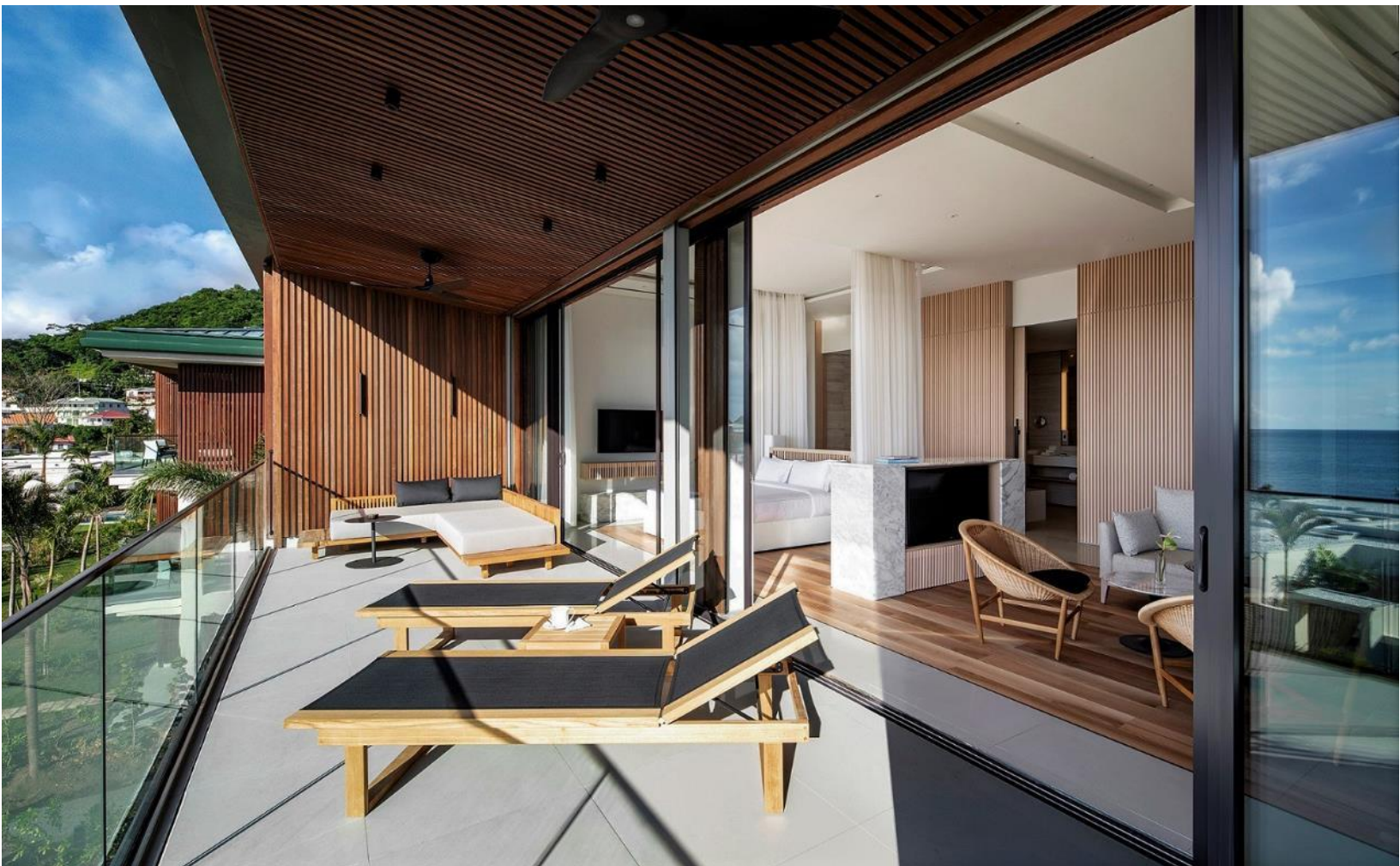


SILVERSANDS

GRENADA

## OCEAN VIEW ONE BEDROOM SUITE

The open-floor plan OCEAN VIEW ONE BEDROOM Suites are located on the Penthouse Level of our hotel buildings, providing advantaged views of Grand Anse Beach and stunning Caribbean sunsets. Generously sized, they provide a total of 122 square meters (1,310 square feet) of indoor and outdoor private space. The spacious open living area is ideal for entertaining as it provides seating for seven and seamlessly connects to the terrace beyond. There is a powder room off the living room area as well as a service pantry. The expansive terrace offers 26.7 square meters (287 square feet) of space, two oversized chaise longues and a dining table for four. Both the living area and the bedroom area open to the terrace. Designed for modern couples who appreciate open spaces, there is a built-in cabinet that separates the living area from the bedroom area. The bed faces the outdoor terrace and the ocean beyond. The suite has internal connecting doors to the Studio Suites at either side of it, allowing to be set up as a Two-Bedroom Suite or a Three-Bedroom Suite. All bedrooms are equipped with a king size bed.







SILVERSANDS

GRENADA

The One Bedroom Suites have a very spacious bathroom that includes a deep soaking tub, a separate rain shower, a double vanity unit, and a water closet. The bathroom connects to a spacious dressing room with built-in wardrobes.







SILVERSANDS

GRENADA

## PENTHOUSE SUITE

Located on the top floor of the hotel building the Penthouse Suite grants the best views of Grand Anse Beach and all the beautiful nature of Grenada. The open floor plan suite offers a total of 192 square meters (2,066 square feet) of private space, including two private terraces to take in the vistas from both the living area and the bedroom area.

The Penthouse welcomes its guests into an open floor plan with a living room area with seating for eight as well as an intimate lounge area for two. The dining area of the suite has a dining table for eight and a curated library. There is a service pantry as well as a powder room right off the living area. Sliding glass doors lead to the spacious terrace, appointed with two oversized chaise longues, a dining table for four and ceiling fans.







SILVERSANDS

GRENADA

## PENTHOUSE SUITE MASTER BEDROOM

The corner master bedroom is equipped with a king size bed, offers a seating area with a reading chair as well as a chaise longue and a writing desk. The very spacious bathroom in the suite includes a deep soaking tub, with views of the ocean, a separate rain shower, and double vanity unit. There is an ample dressing room with built-in wardrobe and a separate make up counter.







SILVERSANDS

GRENADA

## HILLSIDE THREE BEDROOM VILLA

The scene is typical of any given night at a Silversands Grenada hillside villa. The elevated position supplies both seclusion and startling drama. Designed to spill its numerous levels – all understated luxury – down the hillside, the villa cascades into a series of spectacular hanging gardens.

The floorplan of the Hillside Villa is set in three tiers and offers three master bedrooms. The first level, Garden Level, has a master bedroom with a king bed and full bathroom with double vanity unit, separate shower and deep soaking tub. There is a private patio off the bedroom with two chaise longues, a plunge pool and an outdoor shower.







SILVERSANDS

GRENADA

## THREE BEDROOM HILLSIDE VILLA LIVING/DINING AREA

The villa is designed to provide the best of indoor-outdoor living, and the second level offers the main living and dining areas with seating for eight and a dining table for ten. There is a fully equipped kitchen and a powder room. The living space seamlessly connects with the outdoor living area and private pool.







SILVERSANDS

GRENADA

## THREE BEDROOM HILLSIDE VILLA TERRACE AND POOL

The outdoor patio offers a 61-square meter (656 square feet) swimming pool, several lounging areas and a dining table for ten and beautiful views of the ocean and the hanging gardens that surround them. Also on this level is the second master bedroom with a king size bed and a sitting area with a chaise longue and a chair. The ensuite bathroom has double vanity unit, a separate bath tub, a rain shower and a water closet. There is dressing room with built-in wardrobes and a writing desk.





SILVERSANDS

GRENADA

## HILLSIDE VILLA TOP LEVEL MASTER BEDROOM

The third level of the villa has the third master bedroom with ensuite bathroom with double vanity unit, separate tub, rain shower and a water closet. There is a private terrace off the bedroom with two chaise longues and corner sofa.







SILVERSANDS

GRENADA

## HILLSIDE VILLA FLOORPLAN

Garden Level



Middle Level



### Hillside Villas

Designed in three levels with personal space in mind. Each of the three levels has a master bedroom with seating area and ensuite bathroom. The plot sizes start at over one thousand and two-hundred square meters and include a private pool of over fifty square meters and a plunge pool.

Top Level





SILVERSANDS

GRENADA

## BEACHFRONT FOUR-BEDROOM VILLA

The ravishing beauty of Grand Anse beach is inexorable in its magnetic pull. Five villas sit on its edge, inviting you into a world where time itself seems to slow down. Silversands' beachfront villas present a world in which life's pace has one setting: unhurried. And in this place of unbroken peace, five breathtaking villas are positioned directly on the beach, dispensing with barriers between nature and inviting this incomparable seascape into the home.







SILVERSANDS

GRENADA

## BEACHFRONT VILLA LIVING AND DINING AREA

The open floor plan of the grand living and dining area are perfectly framed by the views of the private pool and the ocean beyond it. Ideal for entertaining with an indoor dining table for ten and abundant seating in the living area.



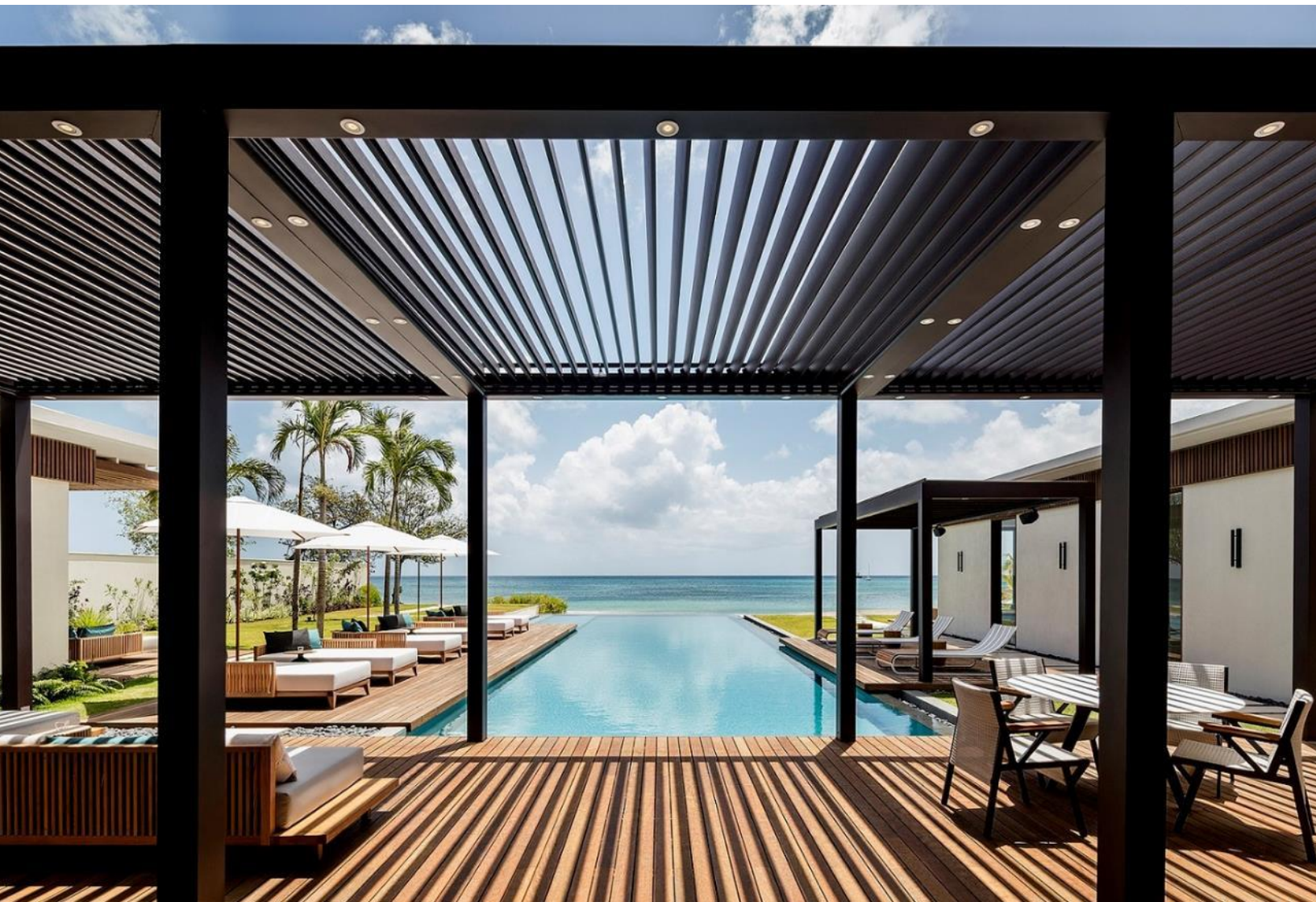


SILVERSANDS

GRENADA

## BEACHFRONT VILLA POOL DECK AREA

Grenada is meant to be enjoyed outdoors and the generously sized private pool deck area, located directly in front of the beach, provides two lounging areas, an outdoor dining table for ten, a private pool with over 127 square meters (1,300 square feet) of water surface, and infinite views of Grand Anse beach.







SILVERSANDS

GRENADA

## Beachfront Villa Front Master Bedrooms

Each of the Beachfront Villas' four master bedrooms is designed as an individual pavilion with the upmost of attention to privacy. Each of the four master bedrooms has a king size bed and a sitting area with a chair and a chaise longue. Each bedroom is in the four corners of the villa and positioned to provide privacy as well as private indoor and outdoor spaces. The two master bedrooms in the front of the villa have an outside patio with views of the ocean and the villa's private pool.





SILVERSANDS

GRENADA

## BEACHFRONT VILLA BACK MASTER BEDROOMS

The Villas' two master bedrooms the back have private patios with plunge pools and outdoor showers. They are also equipped with a full ensuite bathroom with double vanity kit, water closet, rain shower and deep soaking bathtub.







SILVERSANDS

GRENADA

## BEACHFRONT VILLA KITCHEN AND PANTRY

A state-of-the-art kitchen and service pantry facilitates gatherings with friends and family. The hotel can arrange for Private Chefs and the Villa Personal Assistant will make all the necessary arrangements from pre-arrival to departure.





SILVERSANDS

GRENADA

## BEACHFRONT VILLA PLOT SIZES

The plot size of the five villas ranges from 2,071 square meters (22,292 square feet) to 2,373 square meters (25,543 square feet). The indoor space of the Villa is 407 square meters (4,381 square feet) and a total of 220 square meters (2,368 square feet) of terraces.







SILVERSANDS

GRENADA

## BEACHFRONT VILLA FLOORPLAN





SILVERSANDS

GRENADA

AN INTIMATE LUXURY RESORT

