



Escape to the magical heart of Ceylon Tea

Ceylon Tea Trails is the world's first tea bungalow resort, perched at an altitude of 1250 metres in Sri Lanka's panoramic Ceylon tea region, bordering the UNESCO World Heritage Central Highlands. Tea Trails is the first Relais & Chateaux resort in Sri Lanka.

This award-winning boutique resort comprises of five restored colonial era tea planters' bungalows, offering period furnishings, exquisite butler service & gourmet cuisine. Bungalows vary from 4 to 6 rooms & suites; 27 rooms in all. Book an individual room or a group could reserve a complete bungalow.

Each of the five bungalows is unique - lakeside Castlereagh, Summerville & Dunkeld, Norwood with panoramic views and Tientsin, the most traditional colonial. We encourage you to visit the other bungalows to enjoy a meal or partake of our famous cream tea.

Rates are fully inclusive. Everything is included – gourmet meals, wines, spirits, laundry, Wi-Fi and the signature "Tea Experience" tea fields & factory tour with our Tea Planter in Residence. A minimum 2 nights' stay is requested.

How to get to Tea Trails

Ceylon Tea Trails is situated south of Hatton in the Dickoya and Bogawantalawa region of the hill country in south-central Sri Lanka. Most guests come by private car as part of a bigger exploration around Sri Lanka. The nearest major town is Hatton, which is 20 minutes away from the nearest bungalow, Summerville, and 45 minutes from the farthest, Tientsin. There is a railway station in Hatton with services to Colombo, Kandy and Nuwara Eliya & Ella. The train journey is very picturesque. Rapid floatplane or helicopter transfers are also available. Please refer to the Resplendent Transfers brochure for full details.

For directions, please click [here](#).

Distances

Colombo Airport 160 km 4.5 hours, Colombo 130 km 4 hours, Nuwara Eliya 48 km 1.50 hours, Kandy 68 km 2.5 hours.

Rates include

English or Sri Lankan breakfast, 3-course lunch or Sri Lankan rice & curry (gourmet packed lunch if on excursion), Traditional afternoon cream tea (scones, clotted cream, jams, cakes, sandwiches), pre-dinner cocktails, 4-course gourmet dinner, selection of wines, premium spirits & liqueurs, beer, juices and soft drinks, "Tea Experience" tea fields & factory tour with our Tea Planter in Residence, bungalow amenities including Wi-Fi, all taxes and service charge.

Child policy

Children are welcome but in keeping with the peaceful ambiance and tranquil setting that is at the heart of Ceylon Tea Trails, we ask that parents exercise judgment when booking with young children. We would encourage children with a mild temperament, so as not to disturb other guests' enjoyment.

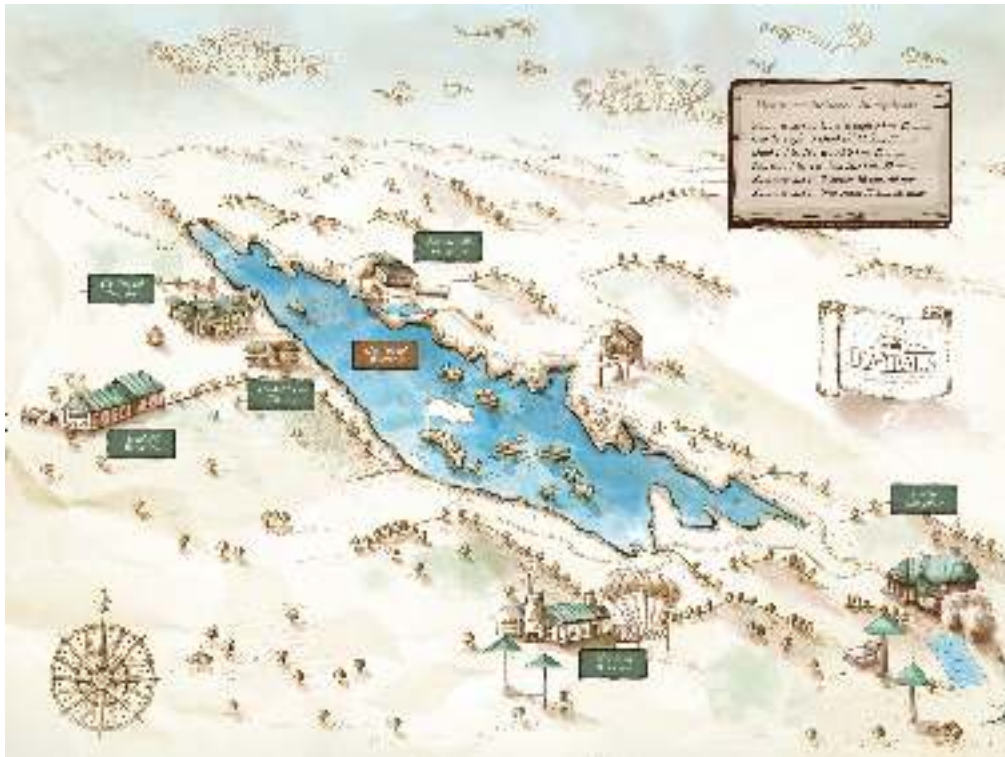
Payment Terms

30% deposit at the time of booking, balance payable 30 days prior to arrival. During the peak period (20 December to 10 January) 30% non-refundable deposit is required to guarantee, balance 60 days in advance.

Cancellation Terms

Within 30 days of arrival - 30% of total stay, within 14 days - 50% of total stay, within 7 days -full charge. For stays during the peak period (20th December to 10th January); within 45 days of arrival - 50% of total stay, within 30 days of arrival – full charge.

Check in time 14:00 and Check out 11:00



Bungalow Information

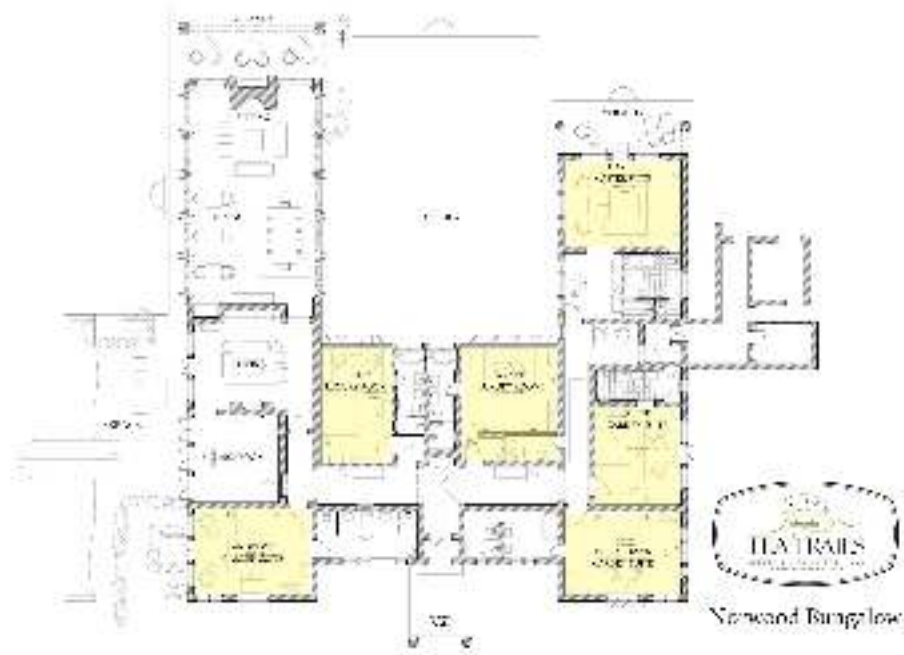
The five bungalows are between 4 km and 15 km apart. Rooms are named after colonial British estate managers who lived in the bungalow. Master Suites have living rooms and private gardens, Garden Suites have tranquil private gardens. All rooms offer ensuite bathrooms with twin vanities, a traditional bathtub & walk in shower. All bungalows provide complimentary Wi-Fi.



Norwood Bungalow

Built 1890 rebuilt 1950, altitude 4300 feet/1310 meters 6 bedrooms, Swimming pool, heated outdoor jacuzzi, summer house, croquet, conservatory, library, garden dining, in-room spa treatments.

The bungalow at Norwood commands a fine view of the eastern end of the Bogawantalawa valley and rests in the shelter of one of the finest bamboo stands to be found anywhere.



Hazel Master Suite

62 sq.m - King bed, separate living room, bath and walk-in rain shower, view of private garden and tea fields.

Irvine Garden Suite

45 sq.m - King bed, bath and walk-in rain shower, view to private garden.

Andrews Garden Suite

46 sq.m - King bed, bath with rain shower, view to private garden.

Trevaldwyn Garden Suite

39 sq.m - King bed, bath and walk-in rain shower, view to private garden.

Jeffery Luxury Room

31 sq.m - Twin beds, bath with rain shower, garden view, direct garden access.

Wyatt Luxury Room

30 sq.m - King bed, bath and walk-in rain shower, garden view, direct garden access.

Address

P. O Box 5, Hatton. Phone +94 51 738 8400,
 Fax +94 51 224 0008 norwood@resplendentceylon.com



Tientsin Bungalow

Built 1888, altitude 4600 feet/1402 meters 6 bedrooms Swimming pool, heated outdoor jacuzzi, tennis court, library, garden dining, in-room spa treatments

Step into the world of Tientsin and step back in time. Named after the Chinese village from which the original tea seedlings came, this very British residence is a historical landmark.



Irvine Stewart Master Suite

91 sq.m – king bed, separate living room, bath, walk in rain shower, view across valley & tea fields

Bretherton Garden Suite

45 sq.m – king bed, bath with rain shower, private verandah with garden view

Moir Garden Suite

43 sq.m – king bed, bath with rain shower, private verandah with garden view

Fraser Garden Suite

36 sq.m – king bed, bath with rain shower, private verandah with garden view

Bremer Luxury Room

44 sq.m – king bed, bath with rain shower, garden view

Meares Luxury Room

40 sq.m - twin beds, bath with hand shower, garden view

Address

P. O Box 5, Hatton. Phone +94 51 738 8403

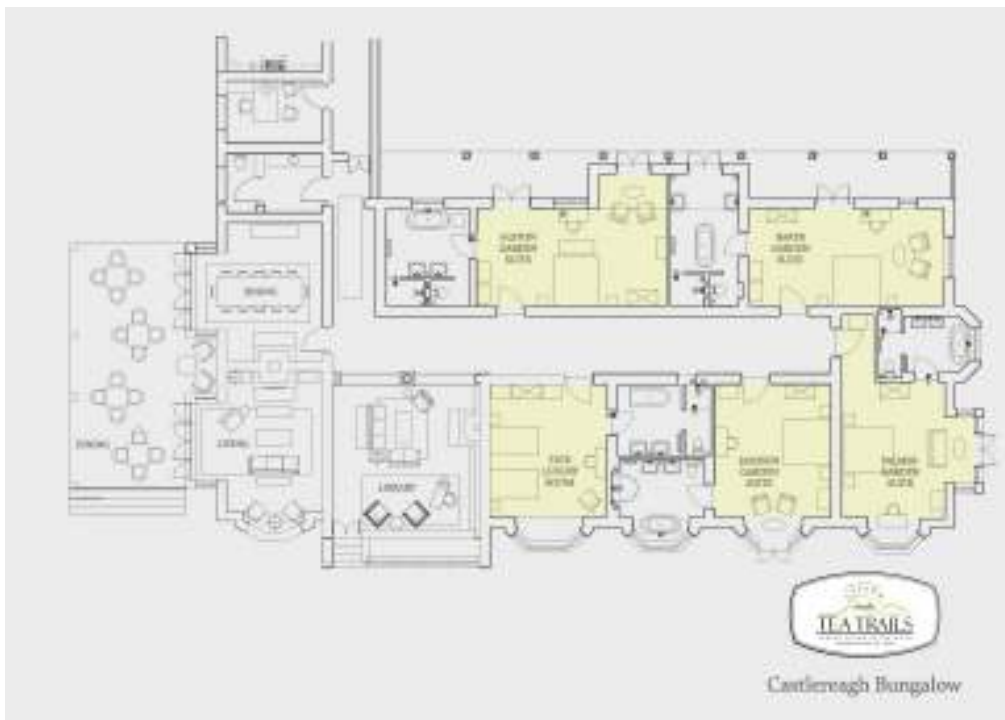
Fax +94 51 224 0008 tientsin@resplendentceylon.com



Castlereagh Bungalow

Built 1925, altitude 4025 feet/1227 meters 5 bedrooms Swimming pool, heated outdoor jacuzzi, summerhouses, croquet, library, garden dining, in-room spa treatments.

Travelers approaching Castlereagh from the road can glimpse tantalizing views across the lake of this magnificent symbol of the glory days of colonial life.



Baker Garden Suite

45 sq.m – king bed, bath and walk-in rain shower, view of tea fields & mountains, private verandah & garden.

Alston Garden Suite

46 sq.m – king bed, bath and walk-in rain shower, view of tea fields, private verandah and garden.

Palmer Garden Suite

36 sq.m – king bed, bath and walk-in rain shower, view of tea fields and lake, private garden.

Jamieson Garden Suite

40 sq.m – king bed, bath and walk-in rain shower, view of lake & tea fields, private garden.

Tate Luxury Room

41 sq.m – twin beds, bath and walk-in rain shower, view of lake & tea fields.

Address

P. O Box 5, Hatton. Phone +94 51 738 8401,
Fax +94 51 224 0008 castlereagh@resplendentceylon.com



Summerville Bungalow

Built 1923, altitude 4000 feet/1219 meters 5 bedrooms Swimming pool, summer house, sunbathing deck, garden dining, in-room spa treatments.

High above the lake at the edge of a tea plantation, Summerville stands sentinel. This five-room bungalow enjoys magnificent views of the water and beyond to tea planted mountains in the distance.



Shuttleworth Master Suite

70 sq.m – King bed, separate living room, bath & walk in rain shower, private garden.

Garnet Garden Suite

45 sq.m – King bed, bath with rain shower, view of reservoir from private garden.

Goddard Garden Suite

47 sq.m – King bed, bath with rain shower, view of private garden.

Cosby Garden Suite

45 sq.m – King bed, bath & walk in rain shower, view of lake from private garden.

Middleton Luxury Room

38 sq.m – Twin beds, bath with rain shower, garden view.

Address

P. O Box 5, Hatton. Phone +94 51 738 8402,
Fax +94 51 224 0008 summerville@resplendentceylon.com



Dunkeld Bungalow

Built 1925, restored 2015, altitude 4500 feet/1402 meters, 5 bedrooms, swimming pool, heated outdoor jacuzzi, library, garden dining, in-room spa treatments.

Poised high above Castlereagh lake, the bungalow looks down on the verdant tea fields of Dunkeld estate and the tea factory, with spectacular views of the Great Western mountain range.



Taylor Owners Cottage

145 sq.m – standalone bungalow with lake views, heated outdoor Jacuzzi, master bedroom with king bed, living room and verandah.

Greig Master Suite

81 sq.m – king bed, separate living room, bath, walk in shower, view across lake.

Anderson Garden Suite

48 sq.m – king bed, bath, walk in shower, private verandah, garden and mountain view

Clark Garden Suite

48 sq.m – king bed, bath, walk in shower, private verandah, garden and mountain view

Allen Luxury Room

48 sq.m – twin beds, bath, walk in shower, garden and mountain view

Address

P. O Box 5, Hatton. Phone +94 51 228 8840

Fax +94 51 224 0008 dunkeld@teatrails.com



accommodation details

Luxury Room

Luxury Rooms average 40 square metres and offer an impeccably appointed bedroom with king or twin beds and elegant bathroom with twin vanities, a bath & walk-in rain shower.

<ul style="list-style-type: none"> • 1 King bed or 2 Twin beds • Butler service • Elegant en-suite bathroom with bathtub and walk-in rain shower • and twin vanities • Handmade bath amenities • Complimentary Wi-Fi 	<ul style="list-style-type: none"> • Complimentary laundry • In-room safe • Writing desk • 1 Extra bed possible, charges apply • 3 persons maximum (2 adults and 1 child or 3 adults)
--	--

Garden Suite

Garden Suites average 50 square metres and offer a gracefully furnished bedroom with four poster king bed, luxurious bathroom with twin vanities, a bath, walk in rain shower and private garden.

<ul style="list-style-type: none"> • Gracefully furnished bedroom with four poster king bed • Butler service • Terrace leading to tropical private garden • Elegant en-suite bathroom with bathtub and walk-in rain shower • and twin vanities 	<ul style="list-style-type: none"> • Handmade bath amenities • Complimentary Wi-Fi • Complimentary laundry • In-room safe • Writing desk • 1 Extra bed possible, charges apply • 3 persons maximum (2 adults and 1 child or 3 adults)
---	--

Master Suite

Averaging 70 square metres, beautifully appointed bedroom with four poster king bed, separate living room, lavish bathroom with twin vanities, a bath, walk in rain shower and private garden.

<ul style="list-style-type: none"> • 1 King bedroom, some with fireplaces • Butler service • Separate exquisitely furnished living room • Verandah leading to tropical private garden • Elegant en-suite bathroom with bathtub and walk-in rain shower • and twin vanities 	<ul style="list-style-type: none"> • Handmade bath amenities • Complimentary Wi-Fi • Complimentary laundry • In-room safe • Writing desk • 2 Extra beds possible – Charges apply • 4 persons maximum (3 adults and 1 child or 2 Adults and 2 Children maximum)
--	---

Owner's Cottage

A secluded standalone bungalow with lake views, heated outdoor hot tub, master bedroom with king bed, beautifully furnished living room, verandah with spectacular tea field and lake view.

- 145sqm / 1560sqft
- Master bedroom with 1 King bed
- Small 2nd bedroom or dressing room
- Private garden with heated outdoor Jacuzzi overlooking the lake
- Separate beautifully furnished living room and verandah
- Butler service
- Located at Dunkeld Bungalow
- En-suite bathroom with 2 bathtubs
- Separate shower area and large windows overlooking lake
- Twin vanities – Tea leaf extract toiletries
- Handmade bath amenities
- Complimentary Wi-Fi
- Complimentary laundry
- In-room safe
- Writing desk
- 2 Extra beds possible in separate small bedroom, charges apply
- 3 Adults and 1 Child or 2 Adults and 2 Children maximum



Activities

Since the bungalows are on working tea estates, guests will see first-hand how the famous Ceylon tea is made: how the two leaves and a bud are harvested by hand in the fields and freshly processed in the nearby factories, in a traditional manufacturing process unchanged for a century. A complimentary daily tour is provided. We provide guides and equipment for white water rafting, kayaking, mountain biking, guided walks and other excursions. Activities and excursions can be booked during your stay with us but prior notice is recommended.

(see the Resplendent Experiences brochure for full details [here](#))

Frequently Asked Questions

What is the weather like?

As Tea Trails is at an elevation of 4000+ feet, the climate is cooler and less humid than in Colombo and on the coast. Typically, cool mornings, warm days and cool evenings. Daytime temperatures are comfortable in the low to mid 20's Celsius and at night can drop to 10 Celsius hence the fireplaces in all bungalows. There is no air conditioning in the bedrooms.

What is the best season to visit?

Ceylon Tea Trails is a year-round destination. The driest part of the year is between December and May. June/July and October/November are wetter months due to the monsoon. However, the ambience of the bungalows is such that you'd think there's nothing better than curling up in front of a fire with a good book during a shower of rain.

What should we wear?

There is no particular dress code. Bring a light sweater for cool mornings and evenings, sturdy walking shoes to explore and in the monsoon months, a waterproof top.

What is the dress code for meals, especially for dinner?

There is no dress code for meals although many of our guest find it inviting to dress up to celebrate their vacation in style.

Do you provide gluten free meals?

Yes, we can tailor menus based on our guests dietary preferences and restrictions. We ask all our guests to provide us with this information in order to ensure they have a flawless dining experience.

Can I dine at Ceylon Tea Trails if I am not residing at the resort?

Our dining arrangements are dedicated to our in-house guests but we can make case by case arrangements with prior notice.

What is the recommended length of stay?

A minimum 2 night's stay is required. To fully enjoy the unique Ceylon Tea Trails experience we recommend 3 or 4 nights.

Do Tea Trails suit honeymooners?

The atmosphere at Ceylon Tea Trails is perfect for honeymooners. The beautiful tranquil surroundings, wonderful walking trails, personalised services like breakfast in bed, romantic baths and in-room spa treatments provide a magical setting for the romantic in you.

Which bungalow is the best?

All bungalows have their own unique character and setting. We find that guests who visit other bungalows conclude that their own is the best as it becomes their "home". Some points of difference:

- Around the Castlereagh lake where the seaplane lands is the Dilmah Dunkeld tea factory where the Tea Experience takes place.
- Guests arrive at Summerville which is the easiest to access from Hatton town (railway station and closest main town)
- From Summerville we offer a 10 minute boat ride across the water to Castlereagh and Dunkeld to save a longer road detour on estate roads.
- Summerville Castlereagh and Dunkeld have lakes views and are the most central
- Norwood and Tientsin guests drive direct to their bungalows
- Norwood is the "mother ship" as it is centrally located between all bungalows. It has lovely mountain views across the valley.
- Tientsin is further away but the most traditional in design, with beautiful gardens and mountain views.

Are we provided with mosquito nets and repellent?

All rooms are provided with mosquito nets and tea infused mosquito repellents.

What kinds of transport arrangements are available from the airport / Colombo?

Most guests come by private car either as part of a bigger exploration around Sri Lanka or arranged by Ceylon Tea Trails. The journey time is 4.5 hours from Colombo, 2.5 hours from Kandy or 1.45 hours from Nuwara Eliya. We will be happy to arrange any transfers for you. We also have both Sea Plane and Helicopter transfer options available. Most guest find the Sea Plane option to be the preferred and convenient way to transfer to and from Ceylon Tea Trails.

What is the closest railway station and how do I arrange vehicle transfers from there?

Hatton railway station is the closest railway station to Ceylon Tea Trails and our reservations team will be happy to assist you in arranging transfers from the station to the resort.

Do you have accommodation for drivers?

We have secured accommodation for drivers in the area, 6-8km away from the bungalows. We provide this service complimentary, however meals would be charged by the lodging place.

[Download PDF FactSheet](#)