



## **Cape Weligama** Fact Sheet

The most celebrated resort along this fabled island's palm-fringed shores.

Cape Weligama, part of the Relais & Chateaux portfolio, inhabits twelve tropical acres atop a singular promontory above the Indian Ocean on Sri Lanka's southern coast, just thirty minutes east of Galle.

A collection of Villas & Suites; offering 39 bedrooms in all, create the welcoming illusion of a traditional Sri Lankan village. Yet beneath local terracotta-tiled rooftops, stylish interiors unfold as generously sized contemporary living quarters between 130m<sup>2</sup> and 310m<sup>2</sup>, each surrounded by beautiful gardens.

The Suites are in groups of four and can interconnect, ideally suiting families or friends travelling together. The Villas are set within eight stone ringed gardens, with each garden comprising of two to three freestanding Villas and a 15m swimming pool. All accommodations enjoy dining areas and spa facilities.

While a diverse range of activities are on offer, from scuba diving to surfing lessons and lake kayaking to rice paddy bicycling, you may find the greatest pleasure in simply unwinding on your private shaded terrace. The crescent-shaped infinity Moon Pool curves expansively around the cape's edge, taking in sweeping, 270-degree blue views.

A gourmet paradise, Cape Weligama pays homage to its location with the day's freshest catch cooked to order in the Ocean Terrace. Or sample Sri Lanka's iconic local dishes. The cliff edge. Tableau Chefs Table is Cape's signature dining experience with daily changing menus. The Surf Bar provides a relaxed, yet refined, venue for traditional afternoon cream tea, as well as to linger over sunset cocktails and after dinner nightcaps under the stars.

# Resort Map



- 1 RECEPTION
- 2 SANCTUARY SPA
- 3 MOON POOL
- 4 SUN BAR
- 5 SPA
- 6 MAIN SQUARE
- 7 CAPE WELIGAMA SHOP
- 8 OCEAN TERRACE RESTAURANT
- 9 TABLEAU - CHIPS TABLE
- 10 CAPE CLUB
- 11 CONE POOL
- 12 DATE TO EAST BEACH & SPORTS CENTRE
- 13 CLIFF EDGE WALKWAY
- 14 WEST BEACH STAIRCASE
- 15 LOOKOUT PIN
- 16 LOOKOUT MINDO
- 17 LOOKOUT BLUE

**VILLAS**  
The 20 Villas are set within 8 stone ringed private gardens. Each large garden, named after explorers of old Ceylon, comprises 3-4 freestanding Villas with a 18 metre pool.

- EJ DONET HADCKEL
- RK BOBBI RAMEX
- MP MARCO POLO
- XV KING VIKRYA
- IB IRI BATTUTA
- PH RA-HOON
- JB JAMES VAN SPILBERGEN
- SB SAMUEL BRATER

**SUITES**  
The 18 Suites are set in units of four, named after writers and poets who lived in Sri Lanka. They overlook the family friendly Cove Pool.

- AD ARTHUR C CLARKE
- PH PAOLO NERUDA
- JF JAMES EMERSON TENNENT
- LW LEONARD WOODF



## Accommodation



Accommodation at Cape Weligama is in 23 Villas and 16 Suites. **39 rooms in all.**

**The Villas** are set within eight stone ringed gardens in the upper part of the resort. Each garden comprises two to three freestanding Villas plus a 15-metre swimming pool. Imagine the intimacy of a boutique villa offering the benefits of a larger, world-class resort.

The gardens are named for a distinguished explorer or writer whose historic Ceylon journey captures the spirit of Cape Weligama. The gardens are: Ernst Haeckel - Robert Knox - MarcoPolo - King Vijaya - Ibn Battuta - Fa-Hsien - Joris Van Spilbergen - Samuel Baker

- 6 x Luxury Villas - 130m<sup>2</sup> king bed, verandah
- 8 x Premier Villas - 180m<sup>2</sup> king bed, large verandah
- 3 x Prestige Villas - 180m<sup>2</sup> king bed, living room, bathroom, large verandah.
- 3 x Grand Villas - 200m<sup>2</sup> king bed, living room, large verandah
- 3 x Pool Villas (upper floor) – 130m<sup>2</sup> king bed, living deck, 15 x 4m pool

**The Suites** are situated around the Cove Pool in the lower part of the resort with partial sea views. They are especially well suited to families or friends travelling together, seeking the beach villa experience for which southern Sri Lanka has become synonymous, with the added amenities and activities of a five-star resort.

The Suites are in sets of four in two storey houses, each named after a writer/poet of old Ceylon. There are two Suites on each floor, which can be interconnected via the verandah. The houses are named Arthur C Clarke - Pablo Neruda - James Emerson Tennent - Leonard Woolf

- 8 x Junior Suites - 130m<sup>2</sup> 2 Queen beds (can be connected to make a Super King), verandah for living and dining
- 8 x Master Suites - 150 m<sup>2</sup> King bed, verandah for living and dining



## Junior Suite



### Details

- 130 m2 1400 ft2
- Two queen beds or one super king bed
- One rollaway bed
- One crib on request
- 4 Adults, or 2 Adults and 2 Children
- Semi-private pool in garden, private pool and semi-private pool
- Super King bed or twin Queen beds with pillow menu
- Large walk in wardrobe
- Verandah with lounging & dining areas
- Large desk with work lamps
- Bathroom with twin marble vanities
- Walk in rain shower with steam room
- Stone bathtub
- Handmade bath amenities
- Minibar
- Selection of specialty Dilmah tea
- Espresso machines with Illy coffee
- 46" TV with international channels & complimentary movies
- Sonos Playbar & Play 3 speakers with music library
- Complimentary Wi-Fi
- Individually controlled AC
- Universal electrical sockets & USB charging
- Cordless phone
- RFID door locks
- Elsafe safe deposit box
- Sunbeds on verandah

## Master Suite



### Details

- 150 m2 1600 ft2
- One king bed
- One rollaway bed
- One crib on request
- 3 adults, or 2 adults and 1 child
- Super King bed with pillow menu
- Large walk in wardrobe
- Verandah with lounging & dining areas
- Large desk with work lamps
- Bathroom with twin marble vanities
- Walk in rain shower with steam room
- Stone bathtub
- Handmade bath amenities
- Minibar
- Selection of specialty Dilmah tea
- Espresso machines with Illy coffee
- 46" TV with international channels & complimentary movies
- Sonos Playbar & Play 3 speakers with music library
- Complimentary Wi-Fi
- Individually controlled AC
- Universal electrical sockets & USB charging
- Cordless phone
- RFID door locks
- Elsafe safe deposit box
- Sunbeds on verandah

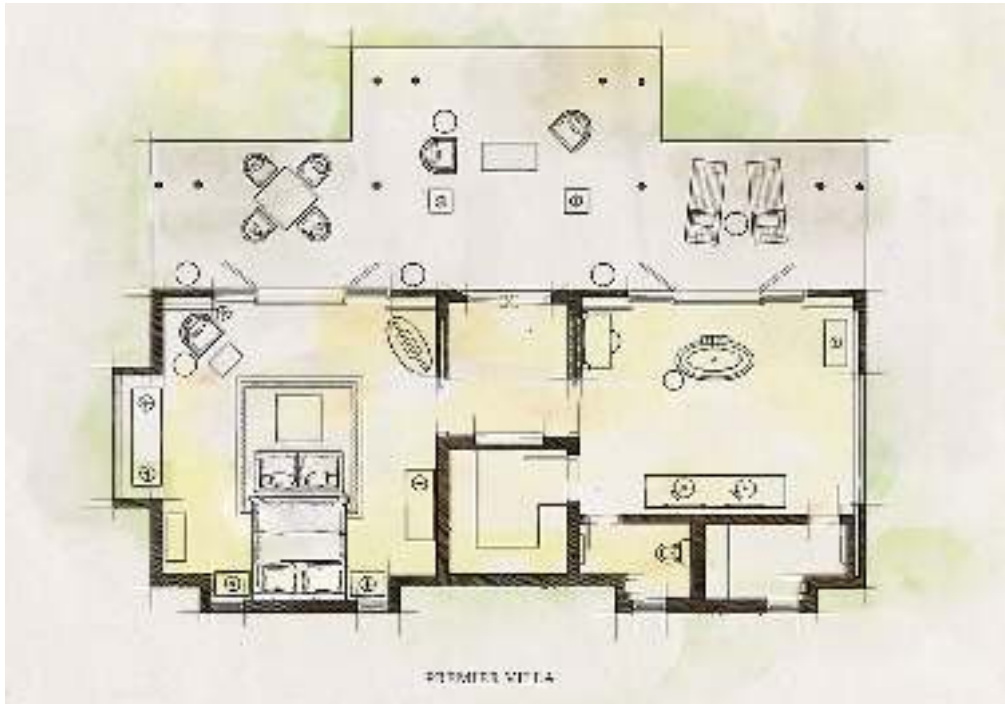
## Luxury Villa



### Details

- 130 m2 1400 ft2
- One king bed
- One rollaway bed
- One crib on request
- 3 adults, or 2 adults and 1 child
- Semi private pool in garden
- Super King bed with pillow menu
- Large walk in wardrobe
- Large verandah with lounging & dining areas
- Large desk with work lamps
- Bathroom with twin marble vanities
- Walk in rain shower with steam room
- Stone bathtub
- Handmade bath amenities
- Minibar
- Selection of specialty Dilmah tea
- Espresso machines with Illy coffee
- 46" TV with international channels & complimentary movies
- Sonos Playbar & Play 3 speakers with music library
- Complimentary Wi-Fi
- Individually controlled AC
- Universal electrical sockets & USB charging
- Cordless phone
- RFID door locks
- Elsafe safe deposit box
- Sunbeds on verandah and garden

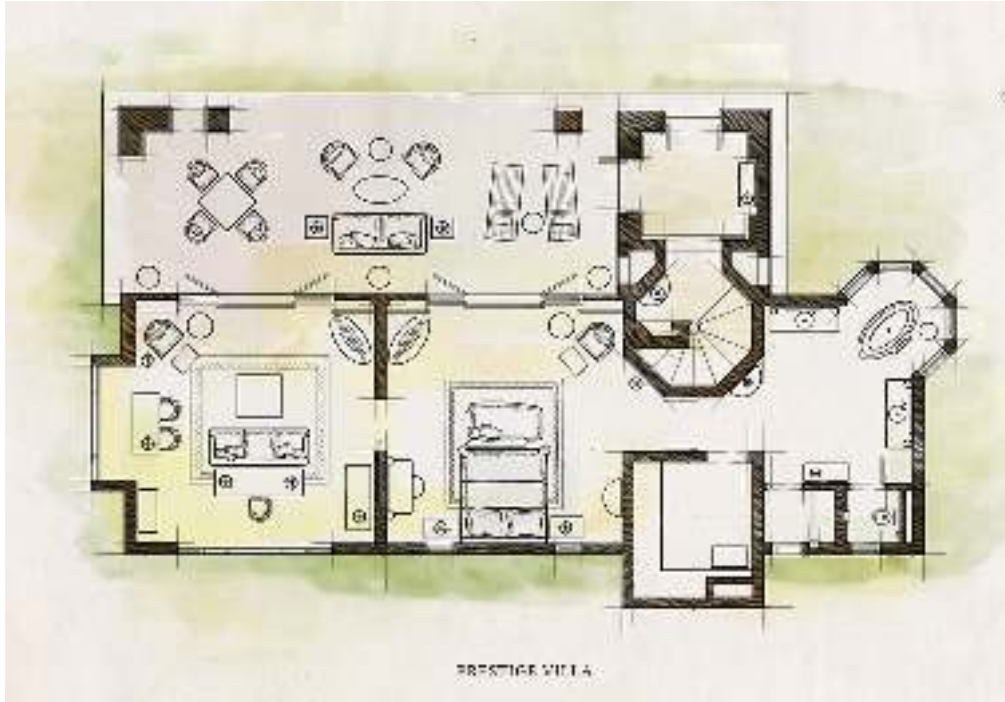
## Premier Villa



### Details

- 180 m2 1950 ft2
- One king bed
- one rollaway bed or one crib on request
- 3 adults, or 2 adults and 1 child
- Semi private pool in garden
- Super King bed with pillow menu
- Large walk in wardrobe
- Large verandah with lounging & dining areas
- Large desk with work lamps
- Bathroom with twin marble vanities
- Walk in rain shower with steam room
- Stone bathtub
- Handmade bath amenities
- Minibar
- Selection of specialty Dilmah tea
- Espresso machines with Illy coffee
- 46" TV with international channels & complimentary movies
- Sonos Playbar & Play 3 speakers with music library
- Complimentary Wi-Fi
- Individually controlled AC
- Universal electrical sockets & USB charging
- Cordless phone
- RFID door locks
- Elsafe safe deposit box
- Sunbeds on verandah and garden

## Prestige Villa

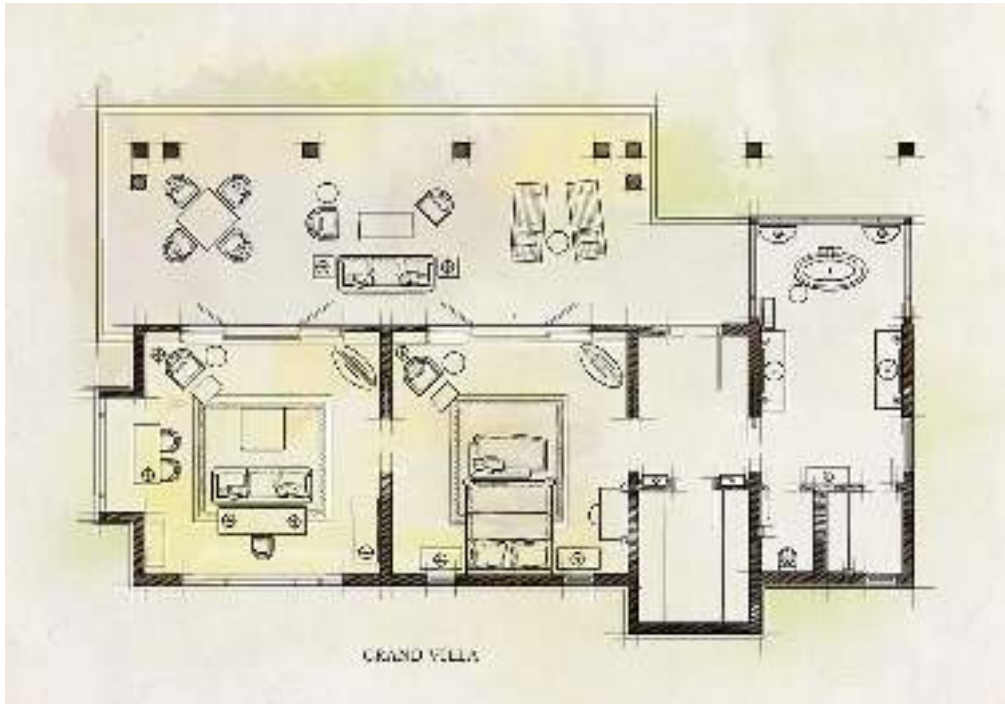


### Details

- 180 m2 1950 ft2
- One king bed
- One rollaway bed or one crib on request
- 3 adults, or 2 adults and 1 child
- Semi private pool in garden
- Super King bed with pillow menu
- Large walk in wardrobe
- Separate living room with bar counter
- Large verandah with lounging & dining areas
- Large desk with work lamps
- Bathroom with twin marble vanities
- Walk in rain shower with steam room
- Stone bathtub
- Handmade bath amenities
- Minibar
- Selection of specialty Dilmah tea
- Espresso machines with Illy coffee
- Two 46" TV with international channels & complimentary movies
- Sonos Playbar & Play 3 speakers with music library
- Complimentary Wi-Fi
- Individually controlled AC
- Universal electrical sockets & USB charging
- Cordless phones
- RFID door locks
- Elsafe safe deposit box
- Sunbeds on verandah & garden



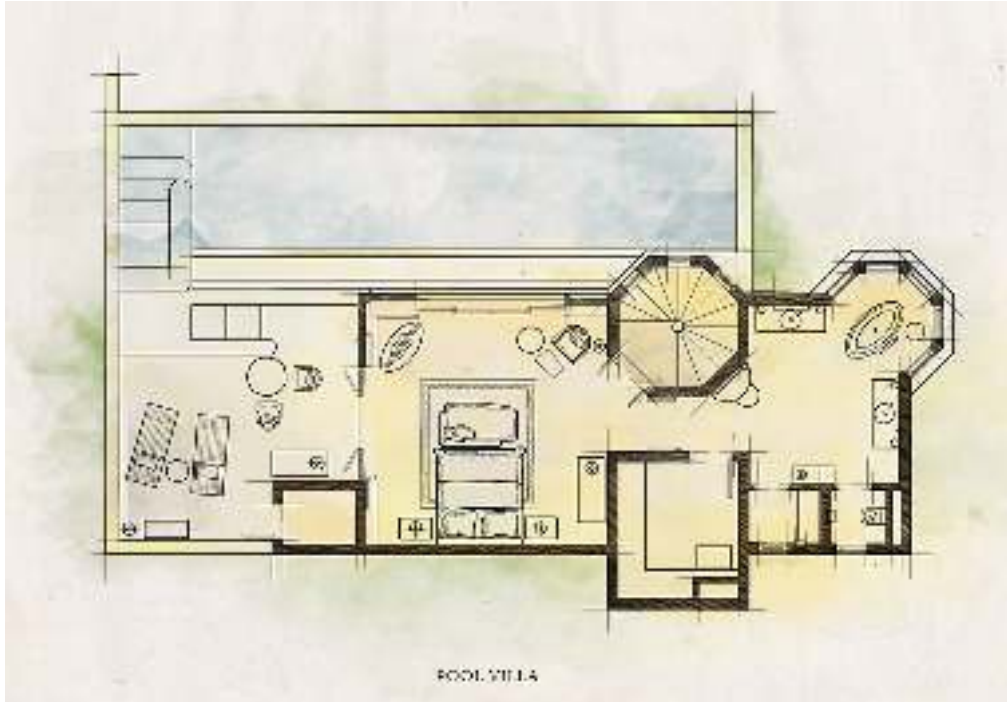
## Grand Villa



### Details

- 200 m2 2150 ft2
- One king bed
- One rollaway bed or one crib on request
- 3 adults and 1 child, or 2 adults and 2 children
- Semi private pool in garden
- Super King bed with pillow menu
- Large walk in wardrobe
- Separate living room with bar counter
- Large verandah with lounging & dining areas
- Large desk with work lamps
- Bathroom with twin marble vanities
- Walk in rain shower with steam room
- Stone bathtub
- Handmade bath amenities
- Minibar
- Selection of specialty Dilmah tea
- Espresso machines with Illy coffee
- Two 46" TV with international channels & complimentary movies
- Sonos Playbar & Play 3 speakers with music library
- Complimentary Wi-Fi
- Individually controlled AC
- Universal electrical sockets & USB charging
- Cordless phones
- RFID door locks
- Elsafe safe deposit box
- Sunbeds on verandah & garden

## Pool Villa



### Details

- 200 m2 2150 ft2
- One king bed
- One crib upon request
- 2 adults
- Private pool and semi-private pool
- Super King bed with pillow menu
- Large walk in wardrobe
- Outdoor timber deck with sunbeds
- Bathroom with twin marble vanities
- Walk in rain shower with steam room
- Stone bathtub
- Handmade bath amenities
- Minibar
- Selection of specialty Dilmah tea
- Espresso machines with Illy coffee
- 46" TV with international channels & complimentary movies
- Sonos Playbar & Play 3 speakers with music library
- Complimentary Wi-Fi
- Individually controlled AC
- Universal electrical sockets & USB charging
- Cordless phone
- RFID door locks
- Elsafe safe deposit box

## Duplex Pool Villa



### Details

- 310 m2 3400 ft2
- Two king beds
- One rollaway bed or one crib
- 5 adults and 1 child, or 2 adults and 4 children
- Private pool and semi-private pool
- 2 Super King beds with pillow menu
- Large walk in wardrobes
- Separate living room with bar counter
- Large verandah with lounging & dining areas
- Large desk with work lamps
- 2 bathrooms with twin marble vanities
- Walk in rain showers with steam room
- Stone bathtubs
- Handmade bath amenities
- Minibars
- Selection of specialty Dilmah tea
- Espresso machines with Illy coffee
- Two 46" TV with international channels & complimentary movies
- Sonos Playbar & Play 3 speakers with music library
- Complimentary Wi-Fi
- Individually controlled AC
- Universal electrical sockets & USB charging
- Cordless phones
- RFID door locks
- Elsafe safe deposit boxes
- Sunbeds on verandah & upper timber deck
- Sunbeds in garden



## Cuisine

Three main dining venues offer distinct experiences. Or dine on your generous veranda. Wake up to breakfast just footsteps from bed on your verandah or savour an intimate private poolside barbecue amongst family and friends, bathed by the silvery light of the moon.

- The **Ocean Terrace** enjoys stunning views of the bay and the setting sun. It is a majestic venue for breakfast, lunch and dinner. The open-fronted restaurant is perfect for indulging in beautiful cuisine whilst watching the gentle swell of the sea. Reservations not required. Open from 07:00 to 22:30.
  - Breakfast - 07:00 to 10:30
  - Lunch - 12:00 to 15:00
  - Dinner - 19:00 to- 22:30
- On the cliff edge is **Tableau** Chef's Table where our culinary team curate daily changing dinner menus emphasising the freshness of seasonal produce and balancing natural flavours, while taking you on a journey of sensory discovery. Reservation required. Seating 19:00 & 21:00 (second seating based on demand)
- The **Surf Bar** serves a Ceylon Afternoon Cream Tea and signature pre-dinner canapés and aperitifs. opening times 10:30 to 24:00
- **Cove Beach Club** at Cape Weligama opening times 11:00 to 18:00.
- All Villas & Suites have dining tables on generous terraces where meals could be served.



## Facilities

- A breathtaking crescent-shaped infinity **Moon Pool** curving 60m around the cape's summit drinks in every inch of the spectacular 270-degree coastal views. It's equally resplendent at night when the pool's inky surface reflects the stars and the bright luminescence of the moon.
- The generous **Cove Pool**, close to the Suites, meanders around an integrated 20m-lap pool, and is ideal for kids.
- Also under the pool is a Cybex equipped air-conditioned **gym** for keeping in shape after overindulging on the resort's mouth-watering cuisine.
- **Electric buggies** convey guests around the resort if they prefer not to walk.
- There are two adjacent public beaches. **West Beach** is accessed via a specially built cliff staircase. **East Beach** is a 5-minute



walk from the resort. A reef provides safe swimming conditions.

- The **“Pola”** gift shop offers a curated selection of beachwear, spices, tea, books and more.



## Sanctuary Spa

The Sanctuary Spa offers 4 treatment rooms, featuring organic home-grown Sri Lankan spice scrubs made from clove, nutmeg, sweet orange and sandalwood relieve stress and naturally attend to travel weary muscles while bespoke, essential oil massage blends incorporate Ceylon tea, renowned for its antioxidant, anti-ageing and calming properties. Unwind with a blissful massage or with a fragrant scrub followed by an invigorating herbal steam treatment.



## Activities & Excursions

Postcard perfect beaches, gently breaking waves and a kaleidoscopic underwater landscape sprinkled with historic wrecks, Sri Lanka's southern coastline does not lack for magnetic charms. Swim and snorkel in the aquamarine bay beneath Cape Weligama. Explore neighbouring coves by kayak or learn to surf on Weligama's legendary curls.

Away from this idyllic coastline, explore Sri Lanka's lush rural hinterland of sleepy villages, paddy fields, meandering lagoons and ancient temples by guided bicycle ride. Take a boat or kayak out on nearby Koggala Lake, its tranquil lagoon edged by fragrant cinnamon gardens and tropical wildlife.

For adventures further afield, must see destinations include Mirissa's vibrant boat harbour, Matara's crumbling ruins and the historic Galle Fort where cobbled streets encased in coral and granite walls reveal ochre washed colonnaded houses, colonial churches, and renowned jewellery boutiques. Elephants, sloth bears & crocodiles may be spotted on day trips to the Uda Walawe national park.

See the Resplendent Experiences brochure [here](#) for full details.

## CHILDREN

- 1 infant (up to 2 years) and 1 child (2 – 16 years) can be accommodated in a room sharing with parents, one rollaway bed and a baby cot can be provided.
- If parents would like to accommodate children in a separate room, a combination of a Junior and Master Suite are recommended. These rooms can be interconnected.
- In a Junior Suite up to 4 children can be accommodated on twin Queen beds
- The Cove Pool is especially designed for families with children below the age of 12 years.
- The Moon Pool is reserved for guests aged 12 years and above.

## DIFFERENTLY ABLED ACCESS

2 rooms offer facilities for wheelchair access.

## PAYMENT TERMS

30% deposit is required at the time of booking and the balance is payable 30 days prior to arrival. During the peak period (20 December to 10 January) 30% non-refundable deposit is required to guarantee, balance 60 days in advance.

## CANCELLATION TERMS

Within 30 days of arrival - 30% of total stay, within 14 days - 50% of total stay, within 7 days - full charge. For stays during the peak period (20th December to 10th January); within 45 days of arrival - 50% of total stay, within 30 days of arrival – full charge.

Check in time 14:00 and Check out 11:00

## HOW TO GET TO CAPE WELIGAMA

Thanks to the scenic Southern Highway, Cape Weligama is only about two hours away from Colombo. A scheduled seaplane service operates from Colombo and a charter seaplane service connects Tea Trails and Cape Weligama.

Distances - Colombo Airport 190km 2 hours, Colombo 150km 2 hours, Galle 24km 30 minutes, Kandy 250km 4.5 hours, Tea Trails 200km 5 hours, Wild Coast 2 hours.

Please refer to the Resplendent Transfers brochure [here](#) for full details.

For directions, please click [here](#).

CAPE WELIGAMA Abimanagama Road, Weligama, Sri Lanka  
Phone (+94 41) 225 3000, Fax 225 3100 [www.capeweligama.com](http://www.capeweligama.com)

Colombo Sales Office  
(+94 11) 774 5730, Fax 774 5731  
[reservations@resplendentceylon.com](mailto:reservations@resplendentceylon.com)

# Frequently Asked Questions

## What is the weather like and what is the best season to visit?

Cape Weligama is a year-round destination. The deep south of Sri Lanka experiences a micro climate which has less effect from the monsoon rains. The driest part of the year is between mid-December to March. The rainy monsoon season is traditionally from May to July. August and September are drier months, with rain returning in October and November. Rains are usually expected during the evening and don't last very long, hence the sun is rarely out of sight for long. Temperatures range on average between 27 to 30 degrees Celsius. Ideal time for diving or snorkelling is in-between late November to early April.

## What should we wear during meals?

There is no particular dress code and our guests prefer to dress smart casual during mealtimes. Beach wear is discouraged in the restaurant

### **What are the meal options available to book? What does each include?**

Your reservation can be made on any of the following meal options and we are happy to assist you with any upgrade requests prior to arrival.

- **Fully Inclusive (All Inclusive)** Includes: Sri Lankan or English breakfast served at the Ocean Terrace or in your room. Dinner & Lunch served at the Ocean Terrace, beverages including house spirits & wines, taxes & service charge.
- **Full Board** Includes: Sri Lankan or English breakfast served at the Ocean Terrace or in your room. Dinner & Lunch served at the Ocean Terrace, taxes & service charge.
- **Half Board** Includes: Sri Lankan or English breakfast served at the Ocean Terrace or in your room. Dinner served at the Ocean Terrace, taxes & service charge.
- **Bed and Breakfast** Includes: Sri Lankan or English breakfast served at the Ocean Terrace or in your room, taxes & service charge.

### **Do you provide Gluten free meals?**

Yes, we can tailor make the menu based on our guests dietary preferences and restrictions. We ask all our guests to provide us with this information in order to ensure a flawless dining experience.

### **What is the recommended length of stay?**

Cape Weligama is situated in the heart of southern Sri Lanka with access to many places of interest such as Galle, Mirissa, Uda Walawe and is renowned for whale watching activities. To fully experience the essence of southern Sri Lanka, we recommend a 4 to 5 night stay.

### **Does the resort suit honeymooners?**

The unique design of Cape Weligama provides seclusion and serenity while services such as breakfast in bed, in-room spa treatments and dining by design at our cliff lookouts make it ideal for romantics and honeymooners alike.

### **Is there an adult's only pool area?**

Yes, the Moon Pool is an adult only pool with a minimum age limit of 12 years. Kids are encouraged to use the Cove Pool, situated near the Junior and Master Suites with a separate kiddies pool, open to children of all ages (under parental supervision).

### **Are children welcome at Cape Weligama?**

Children of any age are welcome to our resort. We have many activities suitable for kids from Body boarding to cycling and we even offer scuba dive trial to kids at our dive pool. All Suites and Villas come with a Library of the latest movies to keep you and your family entertained.

### **Do you offer baby-sitting facilities?**

Baby-sitting services can be arranged for requests made at least 2 days prior to arrival. Please contact our reservations desk to make arrangements.

### **Do you have accommodation for drivers?**

We have secured accommodation for drivers in our staff village, less than 2 km away from the resort. We provide this service complimentary, however meals would be charged separately based on consumption.

[Download PDF FactSheet](#)