



ANANTARA

MAIA · SEYCHELLES
VILLAS



ACTIVITIES BROCHURE



ACTIVITIES

A large panel of activities awaits on land or in the sea.

Part of our beyond all-inclusive, we propose daily activities such as :

Kayaking,

Stand up Paddle,

House reef snorkeling,

Diving,

Garden tours,

Yoga/Qigong,

Fitness and gym

...Our team will be delighted to assist you in organizing your journey.

Additionally, our young guests will have the benefit of enjoying a nice program of activities available on demand.

- Sand castle competition
- Treasure hunt
- Cooking classes
- Crab hunting
- initiation to snorkeling (subject to approval)
- coconut painting
- garden games & tours
- V.I.K - available at our Anantara Spa.

Additionally, your best memories will be created around magical experiences.

Helicopter tour around our turquoise archipelago. Private freedive instructor courses. An unforgettable hiking adventure in our lush forest. Diving with the rich fauna of Seychelles. Mastering a local cooking class with spic-esspoon or a sportive fishing day in one of the most comfortable vessel...

Anantara Maia will provide exquisite moments of our local environment.

SEYCHELLES FROM ABOVE

Roam the skies to discover island delights

Soar into the heavens aboard our helicopter for a unique view of the wonders below. Take in Seychelles from the skies and alight in stunning settings for island discoveries, from wildlife to golfing.





SCENIC FLIGHT

Launch off our helipad and fly over the hidden coves, beaches and mountains of Mahé, before a scenic touchdown amid the magic of sunset. Our helicopter accommodates up to four passengers.

15 mins: **EUR 580**
 30 mins: **EUR 940**
 45 mins: **EUR 1,300**
 90 mins: **EUR 2,380**

TOUCH DOWN AND TEE UP GOLF DAY – PRASLIN

From our helipad, soar above islands and ocean for a 20-minute bird's-eye view tour. Touch down on Praslin at the Constance Lemuria Golf course to enjoy 18 holes on championship-standard greens. Return to the resort by helicopter.

EUR 2,295

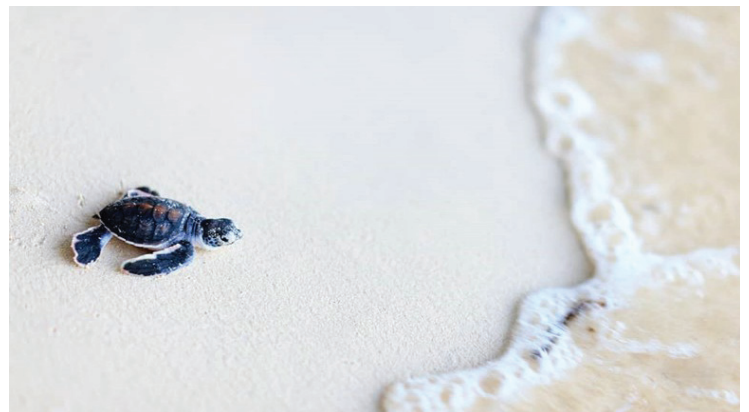
includes flight and landing fees for two people, and excludes equipment, green fees, club cart and lunch fee. The helicopter can accommodate two golf bags.

ARIDE BIRD SANCTUARY

Depart from our helipad and fly to the island that hosts one of the most important seabird populations in the Indian Ocean. Explore Aride with your own personal ranger for a unique glimpse at what the islands were like before human settlement. A picnic will be laid out by your Villa Host, to enjoy before returning to the resort

EUR 2,920 for a four-hour trip for two guests.

(Bookings subject to opening season and weather conditions.)



DAY OF DISCOVERY

PRASLIN – CURIEUSE / PRASLIN – LA DIGUE

Set off from our helipad on a personalised island tour. Discover Vallee de Mai, Anse Lazio, La Digue Island or Curieuse Island. Cruise out into crystal waters for snorkelling adventures and return to the resort at dusk. Our Guest Relations team will be happy to tailor the perfect day for you and your party of up to four, including lunch bookings at your chosen destination.

From **EUR 3,390**

(Bookings subject to weather conditions and availability.)

COUSIN ISLAND

From the resort helipad, take to the skies on course for one of the most successful conservation projects in Seychelles. Cousin Island is an important breeding site for Hawksbill turtles; learn about the project with your personal warden and enjoy refreshments and light bites before returning to the resort.

EUR 2,430

(Bookings subject to opening season, weather conditions and availability.)

SAILING IN SEYCHELLES

Cruising, fishing and exploring in crystal waters

Set sail on crystal waters to experience Seychelles by sea. Choose your craft, from cruisers and catamarans to fishing boats and luxury yachts, and glide out into the deep blue, guided by expert seafarers for an unforgettable ocean adventure.

ISLAND DISCOVERY | SAILING



46' LEOPARD SAILING CATAMARAN

Length: 14 m | Max capacity: 12 day cruise

Prices

Half day cruise: EUR 2,000

Full day cruise: EUR 3,000

including captain, deck hand, soft drinks and water.

Lunch included on full day.

Air conditionning

Cancellation fees: 35% up to 24 hours prior; 100% same day.

Marine park fees
(anchorage, entry and landing) are not included.

Return transfers between resort: EUR 100
and EDEN Jetty



58' LEOPARD SAILING CATAMARAN

Length: 18 m | Max capacity: 12 day cruise

Prices

Half day cruise: EUR 3,000

Full day cruise: EUR 5,000

including captain, deck hand, soft drinks and water.

Lunch included on full day.

Air conditionning

Cancellation fees: 35% up to 24 hours prior;
100% on same day.

Marine park fees
(anchorage, entry and landing) are not included.

Return transfers between resort: EUR 100
and EDEN Jetty

FISHING



MIGNIGHT EXPRESS 37'

Length: 12 m | Max capacity: 6 pax

Half day fishing: EUR 1,800

Full day fishing: EUR 2,500 (includes lunch)
includes captain, deckhand, softs and water.

Cancellation fees: 35% up to 24 hours prior;
100% on same day. Marine park fees
(anchorage, entry and landing) are included.
Free roundtrip transfers from the resort to the jetty.



RIVIERA 45 'USHAKA' OPEN FLYBRIDGE

Length: 15 m | Max capacity: 6 pax

1/2 | Full day fishing: EUR 3,500 | 5000
big game, casting, jigging, cruising
including soft drinks, water and light lunch - 2 crews

Cancellation fees: 35% up to 24 hours prior;
100% on same day. Marine park fees
(anchorage, entry and landing) are included.
Free roundtrip transfers from the resort to the jetty.
Resort beach pickup and drop-off: EUR 1,200.



MARITIMO 51

Length: 15.7 m | Max capacity: 12
MonoHull Offshore Cruiser. Diesel inboard twin 700 HP.
Luxury interior with air conditioning

Prices:

Full day fishing and cruising: EUR 6,000
including soft drinks, water and lunch for up to 6 people;
EUR 50 for every additional person.

Half day fishing and cruising: EUR 4,000
including soft drinks and water.

Cancellation fees: 35% up to 24 hours prior;
100% on same day. Marine park fees
(anchorage, entry and landing) are not included.
Free roundtrip transfers from the resort to the jetty.
Resort beach pickup and drop-off: EUR 1,000.



CANOPUS / RIVIERA 63

Length: 20 m | Max capacity: 12
Mono Hull high-speed boat. Diesel inboard twin 1080HP.
Luxury interior with air conditioning.

Prices:

Full day fishing and cruising: EUR 12,000
including soft drinks, water and lunch for up to 6 people;
EUR 50 for every additional person.

Half day fishing and cruising: EUR 8,500
including soft drinks and water

Cancellation fees: 35% up to 24 hours prior;
100% on same day. Marine park fees
(anchorage, entry and landing) are not included.
Free roundtrip transfers from the resort to the jetty.
Resort beach pickup and drop-off: EUR 1,500.

BOAT | DAYTRIP



CREOLE ODYSSEA - MAHE

Length: 9 m | Max capacity: 2

Full day (7-8 hours): (2 pax) EUR 950
cruising, snorkeling, beach bbq, soft drinks, water and lunch
Half day (3.5 hours): EUR 515
cruising, snorkeling including soft drinks and water.

"Odyssey pack" (2.30-6.30pm): EUR 615
Afternoon snorkeling Baie Ternay followed by Sunset cruise

cancel fees: 50% up to 24 hours prior - 100% on same day.
Return transfers from the resort to the jetty are provided with extra cost. Marine park fees are included.



OCEAN WAVE - SCARAB

Length: 10 m | Max capacity: 2-4 pax

Amazing itinerary around the inner islands, the trip include the boat, crew, softs drinks and water.
Excursions can be tailor made if necessary, please request the assistance of our guest relations team to custom-made your itinerary.

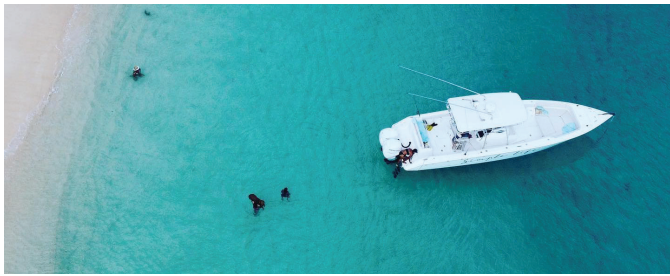
Cap Ternay - Port glaud - Marine park Half / Full day EUR 600/700

Mahe round trip Full day EUR 850

Inshore fishing trip Half / Full day EUR 850 / 1000

Round trip visit Praslin / La digue and surroundings islands EUR 1600

Cancellation fees: 35% up to 24 hours prior | 100% on same day.
Marine park fees (anchorage, entry and landing), food, and taxi transfers are excluded.



SIMPLE LIFE X ZILAIR - PRASLIN LA DIGUE

Full day:

EUR 3,290

Enjoy a fantastic experience taking off from AMSV Helipad by helicopter to reach la Digue Island. You will depart from La Digue on 'simple life' for a private island cruise over a day of discovery in our beautiful Seychelles. Discover among the most beautiful beaches of the archipelago, interact with marine life, visit UNESCO forest, lunch in one of the best local restaurant and come back to Mahe enjoying a magnificent sunset.

This experience is for 3 pax maximum and is available according to seasonnality, please request our team members to assist you in booking this excursion.

Sunshade, towels, cooler box, softs drink, USB Charger, snorkeling equipment, are included equipment onboard.

cancel fees: 50% up to 24 hours prior - 100% on same day.

All land transfers are included. Marine park fees and Restaurant for lunch are excluded.

Activity subject to weather conditions.

YACHTS | MOTORIZED CATAMARAN



AKULA LEOPARD 53

Max capacity: 10

A.C. fully furnished luxury interior.

Sunset diner cruise (4 hours) EUR 2,700

Additional pax EUR 250

Set menu with wines. Bottle of champagne/couple.

Private chef.

Praslin / La digue Trip (7 hours) EUR 4,500

including lunch in a local restaurant, water & softs.

Cancellation fees: 35% up to 24 hours prior;

100% on same day. Marine park fees

(anchorage, entry and landing) are included.

Free roundtrip transfers from the resort to the jetty.

SUNSEEKER MANHATTAN 53

Length: 18m | Max capacity: 10

Diesel inboard cruiser. Luxury interior with air conditioning.

Full day cruise: EUR 6,000

including soft drinks, water and lunch for up to 6 people;

€50 for every additional person.

Half day cruise: EUR 4,000

including soft drinks and water.

Cancellation fees: 35% up to 24 hours prior;

100% on same day. Marine park fees

(anchorage, entry and landing) are not included.

Free roundtrip transfers from the resort to the jetty.

Resort beach pickup and drop-off: EUR 1,500

SUNSEEKER MANHATTAN 74

Length: 22,5 m | Max capacity: 15

Diesel inboard cruiser. Luxury interior with air conditioning.

Prices:

Full day cruising: EUR 9,000

including soft drinks, water and lunch for up to 6 people;
EUR 50 for every additional person.

Half day cruising: EUR 6,500

including soft drinks and water.

Cancellation fees: 35% up to 24 hours prior;
100% on same day. Marine park fees
(anchorage, entry and landing) are not included.

Free roundtrip transfers from the resort to the jetty.

Resort beach pickup and drop-off: EUR 1,500



SUNSEEKER MANHATTAN 70

Length: 21 m | Max capacity: 12

Diesel inboard cruiser. Luxury interior with air conditioning.

Prices:

Full day cruise: EUR 8,000

including skipper, deckhand, soft drinks, water and lunch
for up to 6 people; EUR 50 for every additional person.

Half day cruise: EUR 6,000

including skipper, deckhand, soft drinks and water.

Cancellation fees: 35% up to 24 hours prior;
100% on same day. Marine park fees
(anchorage, entry and landing) are not included.

Free roundtrip transfers from the resort to the jetty.



THE WORLD IS NOT ENOUGH NEPTUNUS MILLENIUM 140

Length: 42 m | Max capacity: 30 pax

Luxury fast super-yacht.

Prices:

Full day: EUR 25,700

including soft drinks, water and lunch, plus wine and
alcohol selection. Luxury cabin and crew service are also
included.

Cancellation fees: 35% up to 24 hours prior; 100% on
same day. Marine park fees (anchorage, entry and landing)
are included.

Return transfers from the resort are included.

SUNSEEKER MANHATTAN 66 'MAZOWE'

Length: m | Max capacity: 8-10 pax

Prices:

Full day: EUR 5,500

including soft drinks, water and lunch, plus wine and
alcohol selection. Luxury cabin and crew service are also
included.

Cancellation fees: 35% up to 24 hours prior; 100% on
same day. Marine park fees (anchorage, entry and landing)
are included.

Return transfers from the resort are included.



ENTERTAINMENT AND EXPLORATION

Capturing the highlights of island life

Discover every facet of Seychelles, from natural wonders and cultural treasures, to warm hospitality and thrilling fun. Drink, dine, explore and play, with countless ways to enjoy your stay.

CLUB LIBERTE CASINO

Experience the premier entertainment venue in Seychelles just 15 minutes' drive from the resort, with roulette, poker, blackjack and baccarat, plus mini prive and VIP gaming rooms, as well as a restaurant and bar.

The Guest Relations team will be delighted to book your visit.

Open daily from 12.00 noon to 4.00 am with live table games from 6.00 to 4.00 am.



FUN AND GAMES

The Recreation Team invites you to spend playful days in and around the resort. Sports include badminton, croquet, football and volleyball, while aquatic activities including kayaking, stand-up paddleboarding, snorkeling and swimming lessons. There's fun for all the family, from sandcastle building and treasure hunts, to pool games and beach walks. Once a week, a marine biologist educator from Wise Oceans helps guests discover the marine life in our private peninsula.

Please contact the Recreation Team, who will be delighted to help personalise your fun.

MAIA GARDEN

Among the best gardens in Africa, this living wonderland entralls visitors. On your 30-minute tour, you'll see 150 different species of indigenous plants, as well as spectacular views of Anse Louis Bay. Take in the scent of tropical flowers and cinnamon, and taste star fruit and mangoes as you explore.

Garden tours are available with our compliments and our Guest Relations team will be pleased to make an appointment with our Chief Gardener for you.



PRIVATE ISLAND TOUR

Discover fascinating Creole culture on Mahé, the archipelago's largest island. Your exploratory journey takes in Sans Souci – La Mission, Victoria Market, the botanical gardens, a traditional craft village and Eden Island, with lunch at Jardin Du Roi.

Our Guest Relations team will be delighted to arrange an island tour for you.

From **EUR 120**

WINE EXPERIENCE

Enjoy a tasting journey created exclusively for you, and discover your palate through the vineyards of the world. Our expert Wine Guru guides you through this 45-minute adventure at the Wine Boutique, sampling the best vintages and crus selected from our Wine Spectator-awarded list.

From **EUR 350 per couple**

Subject to availability, please contact your villa host for assistance and details.

ON LAND AND SEA

Outward-bound activities in paradise

Get ready for action and adventure in Seychelles, where daily thrills await on and off dry land. Plunge beneath the waves, or glide above them with aquatic activities for everyone. Climb the peaks, hike the trails or simply zip from point to point. The choice is yours.

SURFING AND SUP

Enjoy customised surf, stand-up paddling, watermen tuition and tours with iSurf. Escape the crowds and create memories that last a lifetime, whether you are a beginner or expert. iSurf offers picky-up and drop-off for all bookings, lessons are tailored to skill level, weather and sea conditions, and classes include the hire of all boards and safety equipment. iSurf is the only licensed surf school operating in the Seychelles. All coaches and instructors are internationally qualified, with experience in first aid, varied water conditions and safety protocol.

SURFING LESSONS

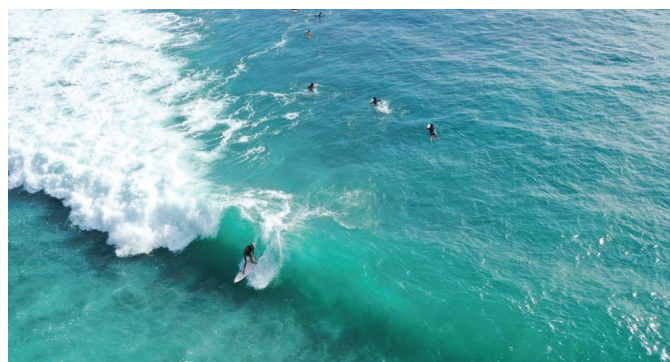
Beginner surf lessons	EUR 280
Intermediate surf lessons	EUR 160
Advanced surf lessons	EUR 160

STAND UP PADDLING LESSONS

Beginner lessons	EUR 110
SUP tour	EUR 130

EXTRAS

Photography	EUR 50
Group rates can be negotiated.	
Prices are inclusive of VAT and service charge.	



DIVING

Just 5 minutes from the resort, The Dive Centre offers a staggering selection of activities and courses. Discover the joys of scuba diving, get certified as an Open Water Diver, or take a refresher course. Group dives are included as part of our “Beyond All-Inclusive package” for Premier Villas only.

Group diving	EUR 80
Discovery Dive	EUR 145
Private boat (2 hours):	EUR 460
Additional hour	EUR 225
Private Dive Master	EUR 150

Open Water Diver Course (4 days):	EUR 550
Prices include all equipment, Dive Instructor on-board and boat.	

Prices exclude EUR 10 transfer to and from the dive resort +15% VAT.



'EXPLORE' MAGICAL DIVING DAY EXPERIENCE

Adventure starts with departure from Mahe island, this day cruise is for experienced divers or for special program on demand, OWD, Advanced, Nitrox etc...

The team will take you for amazing private dives on remote and unfrequented dive sites where you will encounter a very rich Fauna of the Seychelles archipelago.

Dive sites will be selected by the team according to weather conditions, wind, your wishes, and safety!

The speed 'dive' catamaran autonomy allows the team to explore different sites in only one day.

The vessels are spacious, very technic and adapted to dive only, offering standard comfort, cabins, compresor on board, Nitrox EAN on demand and safety international standards.

Posibilities? Wrecks, unexplored sites discovery or sites off the beaten tracks that offers magical experiences, the dreams of experienced divers becomes true feeling one of the first diver on site.

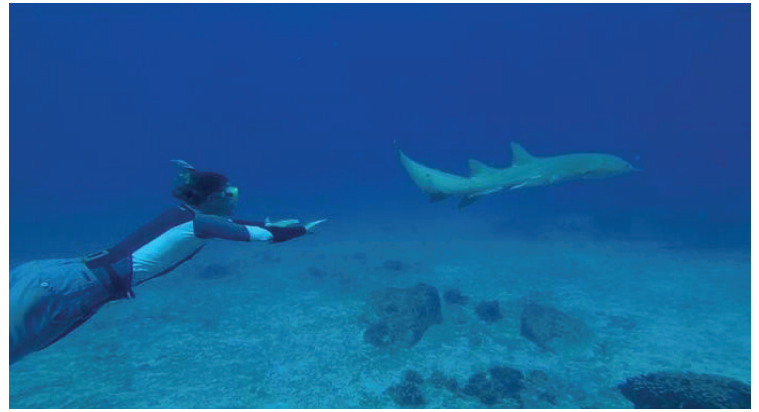
Half day | 4-5 hours approx | (2) two dives
EUR 1,250 for 2 pax.

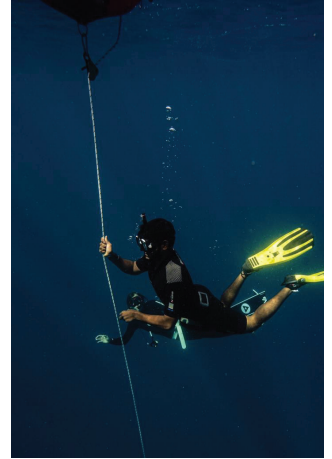
Full day | 7-9 hours approx (3) three dives
EUR 1,990 for 2 pax.

Prices include all equipment, AMSV lunch and drinks, amazing dive sites, crew and private dive master.

Diving courses and special program will be quoted on demand. (OWD, Advanced, EAN Nitrox)

Return transfer jetty to Resort will be outsourced separately.
All taxes included VAT 15%.





FREEDIVING | MOLCHANOV WITH ATOLL DIVERS

The Molchanovs Movement is a global community of passionate, active freedivers with access to the latest freediving education, freediving training, workouts, badges and challenges.

WAVE 1 & 2 :

In this introductory course, you learn the basics of freediving and discover your natural freediving ability. You are taught to learn techniques of visualisation, body scan, to hold your breath beyond a minute and a half and to do breath-hold dives with and without fins. Topics include physics and physiology of freediving, an introduction to freediving equalization, relaxation and breathing techniques, and rescue and safety procedures. If you are taking the Wave 1 course, you are also taught to freedive to a depth of 12-20 meters (40-66 feet) in open water.

Wave 2 Advanced Freediver you will extend your limits further in all disciplines (up to a depth of -30m), become more proficient in no fin techniques, and learn about the monofin technique which is fastest and most powerful way to navigate the underwater world. You will learn the history of freediving, how it all started, where, why and how we got where we are now.

Breathing technics (one full breath / recovery breath) | Meditation (Body Scan, Visualisation) | Frenzel Equalization Technic



WAVE 1 - Beginner EUR 360

Available at the dive center - Transport provided with extra charge. (2 days)

WAVE 2 - Advanced EUR 460

Available at the dive center - Transport provided with extra charge. (3.5 days)

courses can be privatized and will be quoted separately.

Discovery day "APNEA" EUR 1.750

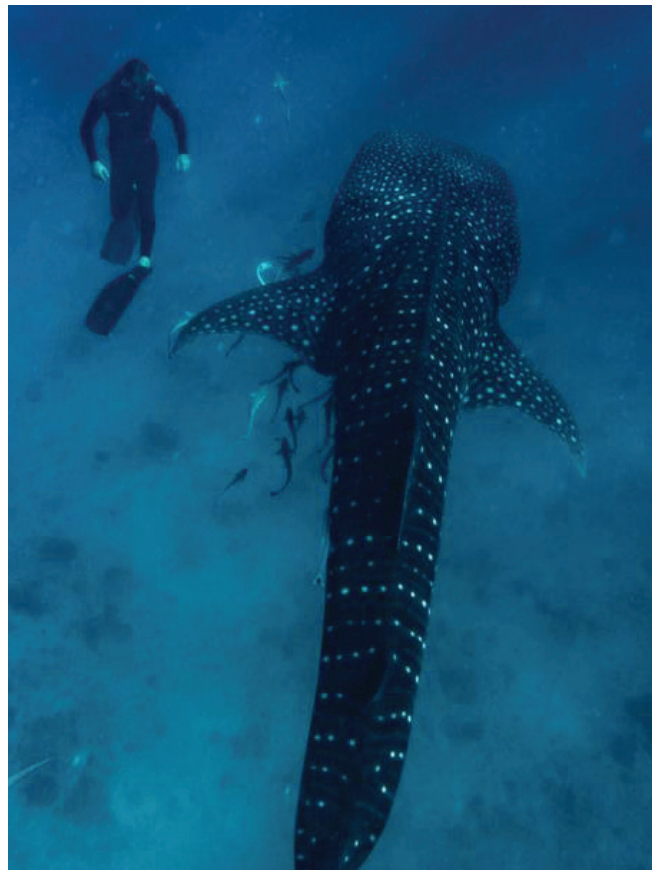
This day is dedicated to freedive, relaxation, connecting with the ocean in deep blue environment.

Return transfer jetty to Resort will be outsourced separately. Non-Molchanov activity.

Private pool courses - In villa : EUR 120/hour

Static apnea, relaxation, stretching.

Non-Molchanov activity.



ZIP-LINING

EUR 70 excluding transfers

Glide through the forest canopy and experience island beauty with an adrenaline hit. Perfect for families, this exciting jungle adventure features eight zip lines from 85 to 120 metres long, and all tours are accompanied by two guides.

Morning tours from 10.00 am

Afternoon tours from 2.00 pm

Booking for this popular activity is essential and the Guest Relations team will be happy to help.

ROCK CLIMBING

Scale island boulders and craggy faces to take in the view from above. Learn the ropes with a belay system in this exciting activity suitable for ages 4 and up.

Prices:

Introduction: EUR 50

Confident: EUR 40

Feeling brave: EUR 35

Reservations must be made at least 24 hours in advance and participants should arrive 15 minutes before the start time. Our Guest Relations team will be happy to help make arrangements.

HIKING

COPOLIA

EUR 230 - 1.5 hours (till 4 pax)

Suitable for beginners, this mountain trail opens onto the wide expanse of granite mountain tops and offers a 180-degree view of the island. Surround yourself with mountain breezes and an incredible view of the eastern marine park.

MARE AUX COCHONS

EUR 280 - 4 hours (till 4 pax)

Deep in the Morne Seychelles National Park, this is a series of interconnecting trails recommended for the moderate hiker, all leading to the Mare aux Cochons valley.

ANSE MAJOR

EUR 245 - 2 hours (till 4 pax)

For the hiking enthusiast, this trip begins in Bel Ombre and traverses granite rocks and steep climbs, with jungle vibes and magnificent ocean views. The beach of Anse Major awaits; quiet and secluded, it's perfect for a refreshing swim. Sunscreen and a swimsuit are recommended.

All prices include transfers, entrance fees, guide, fresh fruit, sandwiches and water.



Anantara Maia Seychelles Villas
Anse Louis, Mahé, Seychelles

T +248 (4) 390 000 F +248 (4) 355 476 E reservations.amsv@anantara.com
anantara.com