



VELAA

PRIVATE ISLAND
MALDIVES

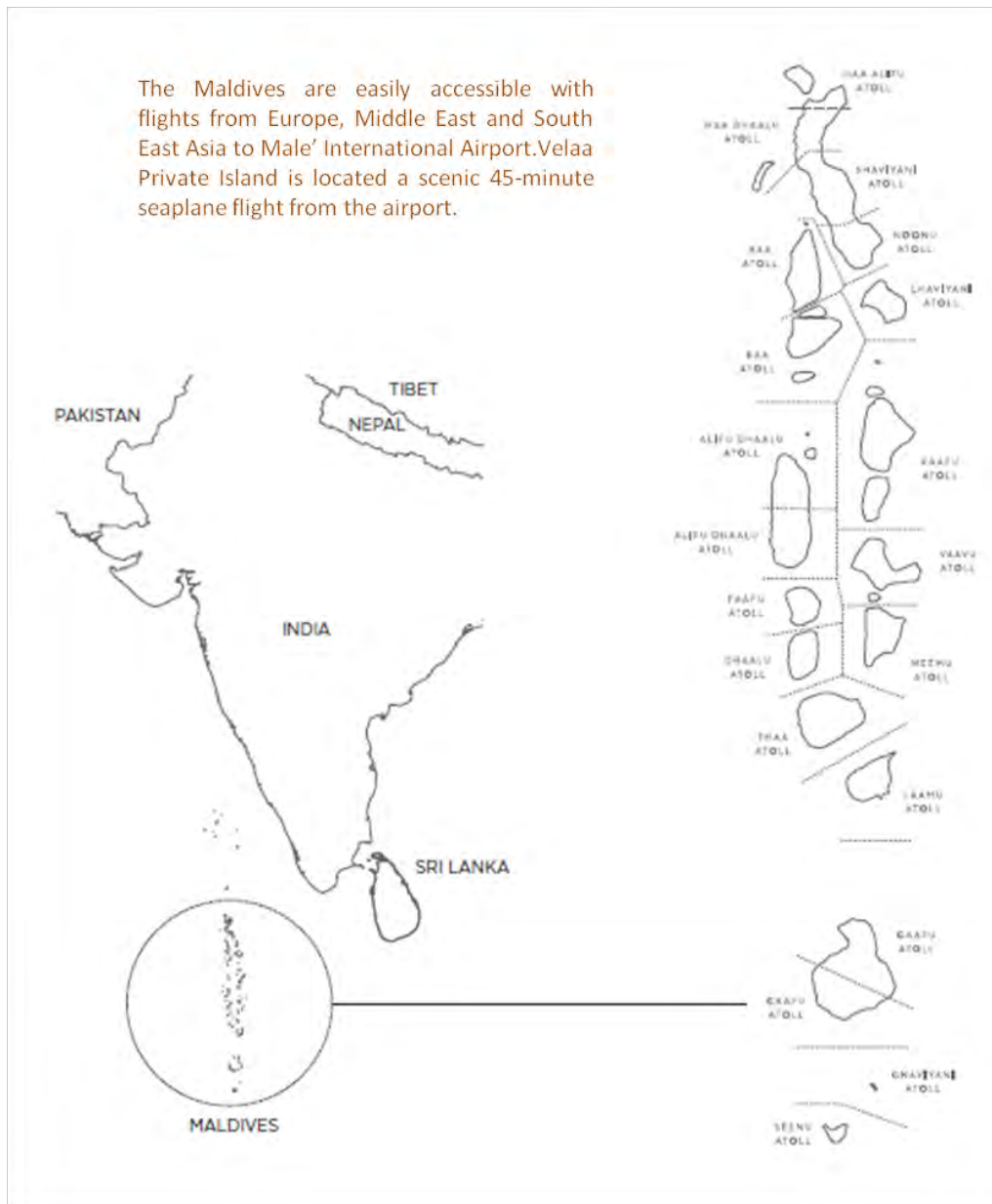


Velaa Private Island, Maldives

“Private Island, Private Moments.”

Located north from Malé, within the constellation of islands that form the Noonu Atoll, Velaa Private Island opens 1 November 2013, bringing new meaning to “private moments” in the Maldives. Here the essence of Maldivian culture, lifestyle and landscape meets limitless opportunities, where no request is too much, and each guest will ultimately feel that this is their own private island.

Map of Maldives



Noonu Atoll, Maldives



Resort Map



Velaa Private Island Maldives

Velaa shares its name and its home with the generations of sea turtles that have inhabited the island for countless years. The colours and patterns of a turtle shell make up subtle nuances in the design, while from a broader aerial view Velaa's exclusive over-water villas resemble the head of a turtle with the island forming the body. Designed by Czech architect Petr Kolar, the overall design concept is contemporary, yet intimate, with Maldivian nuances.

Transportation

The Maldives are easily accessible with direct flights from Europe, Middle East and Southeast Asia to Male' International Airport. Velaa Private Island is located in Noonu Atoll, a scenic 45 minute seaplane flight north from Male' International Airport.

VELAA PRIVATE ISLAND MALDIVES
P.O Box 2071, Noonu Atoll, Republic of Maldives
Tel. +960 6565 000 Fax +960 6566 000
www.velaa.island.com



Velaa Private Island Maldives

Velaa Private Island has been designed and curated with privacy and comfort as the guiding principles while allowing the Indian Ocean to take centre stage. At one with nature, each of our private retreats is built using local materials, combining contemporary flourishes with interiors designed for sensory exploration. Generous terraces and sultry gazebos are positioned to maximise shade, breeze, views and privacy, allowing for total immersion in nature.

Beach Pool Villa



Beach Pool Villa (9 units / 1 bedroom / interior 80 sqm / exterior 179 sqm / pool size 36 sqm). Total area: 295 sqm

These detached one-bedroom beachfront villas are sumptuously furnished. Mahogany louvred panels and intricate lofty ceilings give a colonial feel while teak furniture and suspended bamboo lights bring nature in. Wall to wall glass doors frame the terrace and private pool. By day the villas are light filled, secluded by clusters of palms. An indoor bathroom with romeo and juliet basins opens to a large outdoor bathroom connected by a garden atrium where a gazebo covered daybed overlooks the oversized tub. Day beds, swinging chairs and an alfresco dining area face the Indian Ocean.

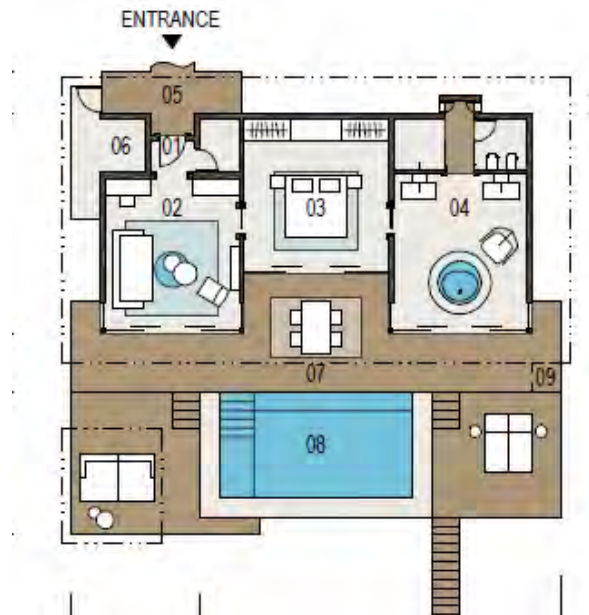
Deluxe Beach Pool Villa



Deluxe Beach Pool Villa (9 units / 1 bedroom / interior 108 sqm / exterior 188 sqm / pool size 50 sqm). Total area: 346 sqm

Natural materials and colours bring the outside in, while handpicked coral sculpture or a suspended pod chair add an element of playful refinement. These private one-bedroom beachfront villas feature a separate large living room, outdoor terrace and private pool and indoor bathroom. The zen-like outdoor bathroom features a huge bath and deck, and reclining daybeds under a pillared podium connected by a garden atrium. The alfresco dining area by the pool is the place to be at sunset.

Sunrise Water Pool Villa



Sunrise Water Pool Villa (8 units / 1 bedroom / interior 94 sqm / exterior 105 sqm / pool size 33 sqm) – Total area 232 sqm

Set off the island along an extended jetty, the crescent of villas each has its own uninterrupted view of the ocean and private pool. The overhanging thatch offers shade over the dining area, while the bedroom and bathroom open onto the terrace, pool and sun deck with steps leading alluringly into the ocean. Inside the comfortable living room is designed around a viewing window set into the floor, while the bed, made up in crisp white linen, faces the ocean. Huge bathrooms with circular baths feature large format murals of turtles.

Sunset Deluxe Water Pool Villa



Sunset Deluxe Water Pool Villa (8 units / 1 bedroom / interior 102 sqm / exterior 114 sqm / pool size 40 sqm) – Total area: 256 sqm

Separated by canvas sails and carefully positioned wooden pillars, each villa has its own uninterrupted view of the ocean and private pool and faces the sunset. The overhanging thatch offers shade in the alfresco dining area, while the bedroom and bathroom open onto the terrace. The pool and sun deck have steps leading alluringly into the ocean, while under the gazebo a vast daybed scattered with cushions catches the final sunset. Inside the comfortable living room is designed around a viewing window set into the floor. Huge bathrooms with circular baths and a swinging chair reflect the water surrounding the villa.

Beach Pool House (2 Bedroom)



Beach Pool House (6 units / 2 bedrooms / interior 189 sqm / exterior 337 sqm / pool size 74 sqm) – Total area: 600 sqm

In lush foliage and flanked by tall palms gently swaying, the two-bedroom beachfront houses are ideal for families or party of four persons. The large living area works as a retreat in the day and a social hub in the evening, leading to the kitchen which looks like a bar with high stools and open shelving, but is practical for catering. Bedrooms blend light and privacy using louvred wood, natural materials and lights suspended from high vaulted ceilings. Rattan swinging chairs add a sense of fun to the elegant décor. Outside the generous terraces and private pool maximise space while carefully positioned day beds and a standalone alfresco dining platform offer panoramic views of the lagoon.

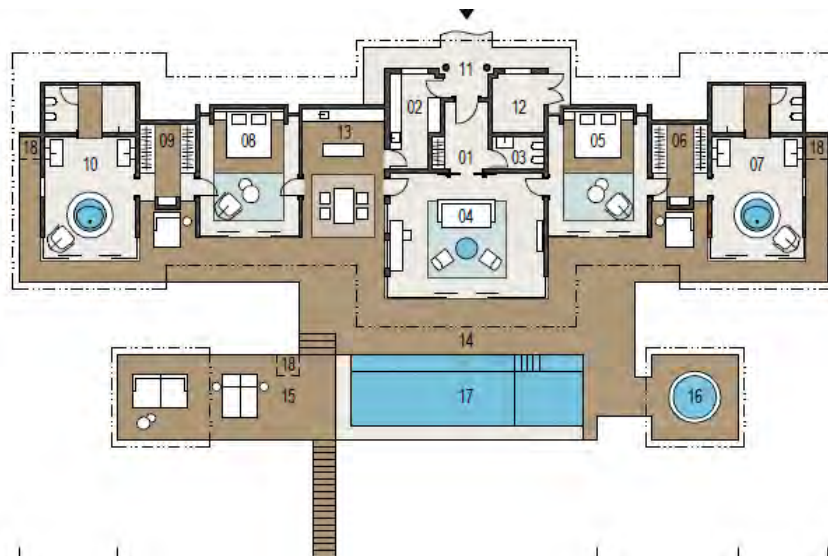
Beach Pool Pavilion (1 Bedroom + 1 Convertible)



Beach Pool Pavilion (1 Bedroom + 1 Convertible) (1 unit / 1 bedroom + 1 Convertible bedroom / interior 189 sqm / exterior 337 sqm / pool size 74 sqm) – Total area: 600 sqm

In lush foliage and flanked by tall palms gently swaying, the one-bedroom beachfront pavilion is ideal for a family or party of four persons. A second convertible space can be arranged according to guests' desires, whether it act as a second bedroom, spa, gym or library. The large living area works as a retreat in the day and a social hub in the evening, leading to the kitchen which acts as a bar with high stools and open shelving, but is practical for catering. The bedroom blends light and privacy using louvred wood panels, natural materials and lights suspended from a high vaulted ceiling. Rattan swinging chairs add a sense of fun to the elegant décor. Outside the generous terraces and private pool maximise space while carefully positioned day beds and a standalone alfresco dining platform gives panoramic views of the lagoon.

Ocean Pool House (2 Bedroom)



Ocean Pool House (1 unit / 2 bedrooms / interior 223 sqm / exterior 233 sqm / pool size 45 sqm) – Total area: 501 sqm

This generous two-bedroom overwater house is fringed with dense thatch and offer elegant living space with carefully curated elements. Louvred shutters let the breeze flow through, while a deep sofa is covered in scatter cushions, ideal for settling down with a good book. The dining area provides a central space while the ocean is the backdrop from every aspect. From the two spacious bathrooms featuring circular baths, to the elegant bedrooms. Swim in your own pool and relax on the sun deck, or step directly into the lagoon. Kick back under one of two gazebos – one with a sunken hot tub and the other with daybeds.

Romantic Pool Residence



Romantic Pool Residence (1 unit / 1 bedroom / interior 197 sqm / exterior 337 sqm / pool size 89 sqm) – Total area: 623 sqm

Suspended above the lagoon with uninterrupted views of the ocean, this private one-bedroom villa offers utmost privacy and romance. Accessible only by boat, all rooms open on to the terraces, where the pool, sundeck and sunken bath offer varying aspects on the horizon. Dine inside at sunset or over the water in the dining gazebo on it's own jetty, or enjoy sundowners on the sumptuous daybeds. Interiors are designed with natural materials and neutral colours with occasional accents of Ikat or animal prints. With a personal gym and spa treatment room there's little reason to leave.

Velaa Private Residence (4 Bedrooms)



VELAA PRIVATE ISLAND MALDIVES
P.O Box 2071, Noonu Atoll, Republic of Maldives
Tel. +960 6565 000 Fax +960 6566 000
www.velaaisland.com

Ground Floor





Velaa Private Residence (2 units / 4 bedrooms / interior 552 sqm / exterior 701 sqm / pool size 96 sqm) – Total area: 1349 sqm

Imagine the definitive beach residence. Secluded on a pristine private beach, carefully curated interiors deliver comfort, style and elegance in equal measures. Large enough to accommodate a group of up to 10 members of family or friends, these two-storey detached residences are laid out with privacy in mind. Each of the 4 bedrooms faces the ocean across a stretch of icing sugar sand, the first floor bedrooms have generous balconies while the ground floor open onto the pool. Indoor and outdoor bathrooms are connected by a garden atrium. Flanked by two gazebos for dining, resting or playing, the pool reflects the ocean and is the central focus. Behind the living space a gym, spa room and outdoor living area offer plenty of quiet spaces to retire to. Subdued lighting and large format photography provide visual breaks to the sea of natural wood and stone that set the tone of the interiors.